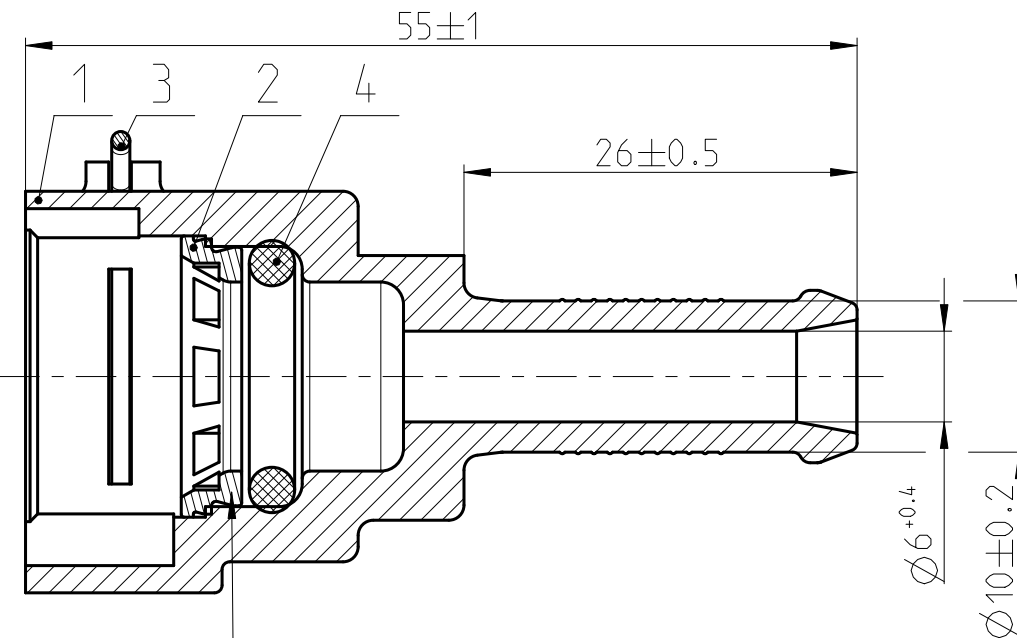


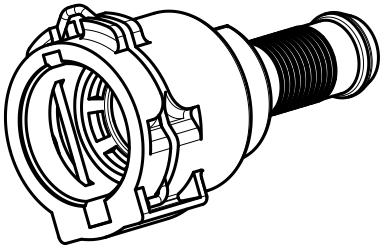
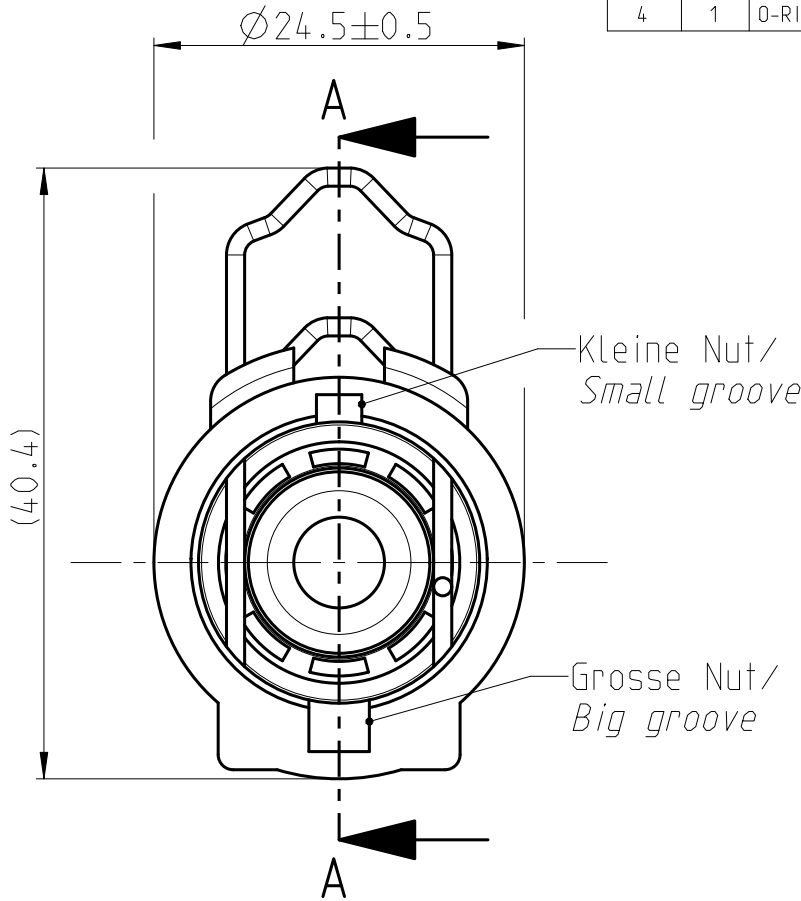
## Angebotszeichnung QUOTATION DRAWING

| Teil-Nr<br><i>ITEM-NO</i> | Stueck<br><i>QTY</i> | Benennung<br><i>PART - NAME</i> | Werkstoff<br><i>MATERIAL</i> | Oberflaeche<br><i>SURFACE</i> |
|---------------------------|----------------------|---------------------------------|------------------------------|-------------------------------|
| 1                         | 1                    | Housing NW 8-10-0 *             | PA66-GF30                    | black                         |
| 2                         | 1                    | Weld ring NW8                   | PA66-GF30                    | black                         |
| 3                         | 1                    | Locking bail NW8                | EN 10270-3-1.4310-NS-1.2     | blank                         |
| 4                         | 1                    | O-RING 12.0 X 3.0               | EPDM-70                      | black                         |

SCHNITT/SECTION A-A



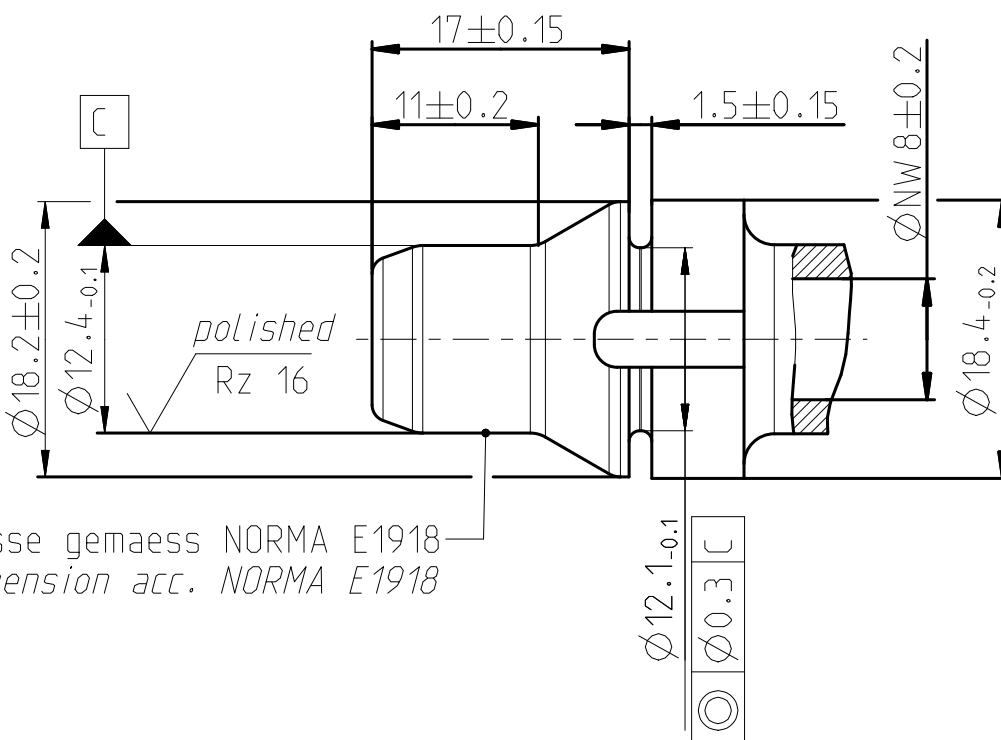
Schweissring durch  
Reibschweissen verbunden.  
*Welding ring by  
friction welding connected.*



MASSSTAB/SCALE 1:1





Ansicht Stützen/View *spigot*  
MASSSTAB/SCALE 2:1



Nicht angegebene Masse gemaess NORMA E1918  
*Not specified dimension acc. NORMA E1918*

| Performance features for NQ PS3 - VDA |  |
|---------------------------------------|--|
| Medium                                | coolant water  |
| Operation temperature                 | -40°C thru 135°C, short-term up to 150°C<br>(max. 30 min. over lifetime) |
| Operation pressure                    | 0 to 2 bar, partial pulsating (sinusoidal)                               |

| NORMAQUICK - ASSEMBLY MARKING |             |
|-------------------------------|-------------|
| Customer part-No.:            | -           |
| Trademark:                    | -           |
| Manufacturer code:            | NORMA RSS   |
| NORMA date code:              | XX YY       |
| Material code molding part:   | >PA66-GF30< |

|   |               |  |   |   |   |  |                        |                            |                 |                                     |   |
|---|---------------|--|---|---|---|--|------------------------|----------------------------|-----------------|-------------------------------------|---|
| -   | -             | -  | -   | -   | - | -  | -                      | -                          | -               | -                                   | - |
| -   | C             | 1  | Drawing created in Pro-E and drawing separated; 1) Marking table added; |   |   |  | -                      | 2014-11-03                 | Mandalapure     | Ries                                |   |
| -   | B             | -  | Neue Teilennummer fuer Verriegelungsboegel, war 1702 8004 008;          |   |   |  | 603950                 | 2006-07-31                 | TS/IC           | Haas                                |   |
| -   | A             | -  | Bemassung korrigiert; O-Ring war 1067 8000 254;                         |   |   |  | 602866                 | 2004-12-22                 | TS/SK           | Bauer                               |   |
| INDEX<br>Teil<br>PART   | Zeichn<br>DWG | Anz.<br>QTY.   | Aenderung<br>DESCRIPTION  |   |   |  | Aend.Nr.<br>CHANGE-NO. | Datum<br>DATE              | Bearb.<br>DRAWN | Gepr.<br>CHECKED                    |   |
| Allgemeintoleranz:<br>GENERAL TOLERANCE:  |               | Form- und Lagetoleranz:<br>FORM AND POS. TOL.:   |   | Abmass fuer Winkel:<br>DEVIATION FOR ANGLE: |   | Gewicht / WEIGHT:<br>errechnet<br>CALCULATED |                        | Volumen:<br>VOLUME:        |                 | Pruefkenzeichnung:<br>TEST MARKING: |   |
| -   |               | -  |   | ±2 °  |   | -  |                        | -                          |                 | cm <sup>3</sup>                     |   |
| Projektions-Methode 1<br>1st ANGLE PROJECTION<br>DIN ISO 128-30                       |               | Material: see parts list   |   |   |   | PART NAME:                                   |                        |                            |                 |                                     |   |
|  |               | Material-No.: -  |   |   |   | NORMAQUICK PS3 NW 8-10-0 °                   |                        |                            |                 |                                     |   |
|   |               | Oberflaeche: see parts list  |   |   |   | -  |                        |                            |                 |                                     |   |
|   |               | SURF. QUAL.: -   |   |   |   | -  |                        |                            |                 |                                     |   |
| NORMA-Patentnummer:<br>PATENT NUMBER:   |               | Massstab:<br>SCALE:  |   | Datum/DATE                                  |   | Name/NAME                                    |                        | Benennung:                 |                 |                                     |   |
|   |               | 2:1  |   | 2003-11-24                                  |   | TS/SK  |                        | NORMAQUICK PS3 NW 8-10-0 ° |                 |                                     |   |
|   |               | Gepr./CHECKED  |   | 2003-11-24                                  |   | Bauer  |                        | -                          |                 |                                     |   |
|   |               | Norm   |   | -   |   | -  |                        | -                          |                 |                                     |   |
| Bandlaenge:<br>LENGTH OF BAND:  |               | Schutzvermerk nach ISO 16016 beachten<br>CONSIDER AFTER PROTECTION<br>NOTICE ISO 16016 |   |   |   |  |                        |                            |                 |                                     |   |
| ZNE:<br>-   |               |   |   |   |   |  |                        |                            |                 |                                     |   |
| Ursprung/Anfrage:<br>ENQUIRY-No.:   |               | NORMA Germany GmbH<br>Postfach 1149 • 63461 Maintal                                    |   |   |   | Zeichnungs-Nr./DRAWING-NO.:                  |                        |                            |                 | INDEX<br>PART DWG TYPE              |   |
| 9900012048  |               | © COPYRIGHT BY NORMA Group   |   |   |   | 0702 8004 008                                |                        |                            |                 | 00 0C Q                             |   |
| CAD-SYSTEM Pro/Engineer   |               | DRAWING-NAME: 07028004008_Q  |   |   |   | SUB.F.: -                                    |                        |                            |                 | SUB.FROM: -                         |   |
|   |               |  |   |   |   | MODEL-NAME: 07028004008                      |                        |                            |                 | MODEL-TYP: ASSEM                    |   |