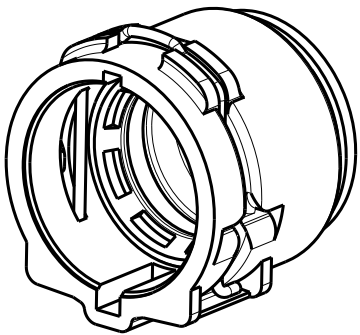
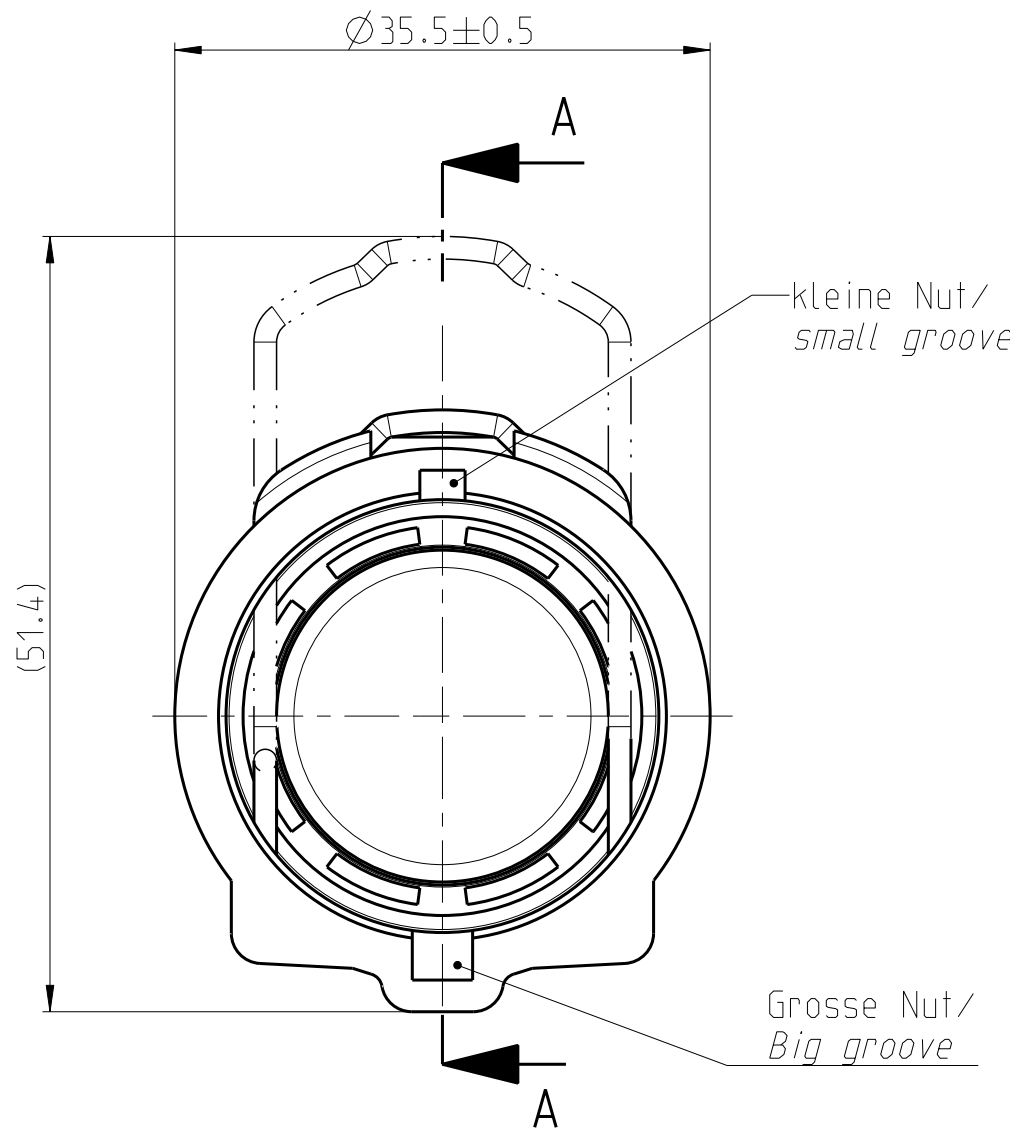
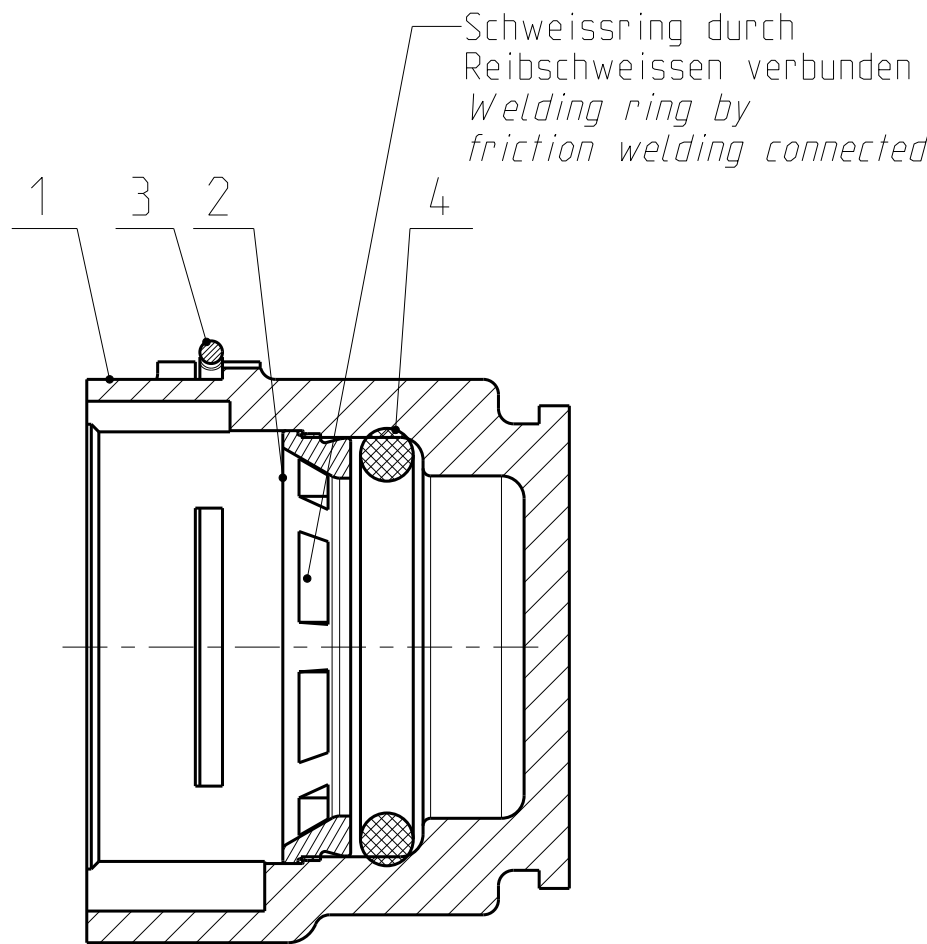


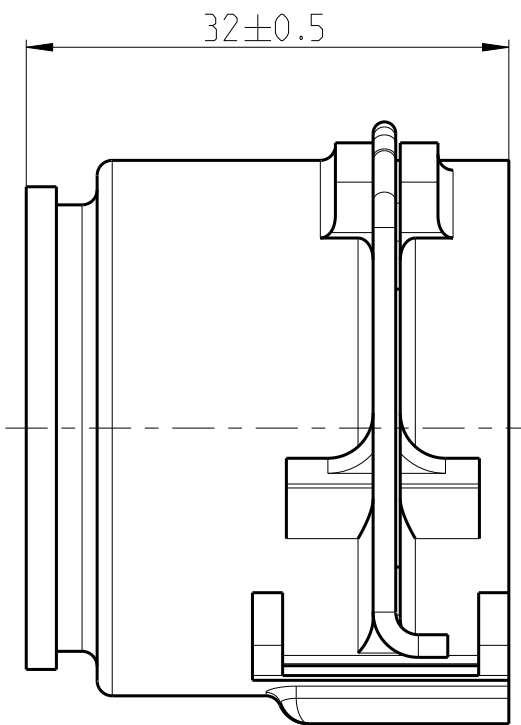
Angebotszeichnung
QUOTATION DRAWING

Teil-Nr. ITEM-NO	Stueck QTY	Benennung PART - NAME	Werkstoff MATERIAL	Oberflaeche SURFACE
1	1	Housing NW 16	PA66-GF30	black
2	1	Weld ring NW 16	PA66-GF30	black
3	1	Locking bail NW 16	EN10270-3-1.4310-NS-1.5	black
4	1	O-RING 22.0 X 3.5	EPDM-70	black

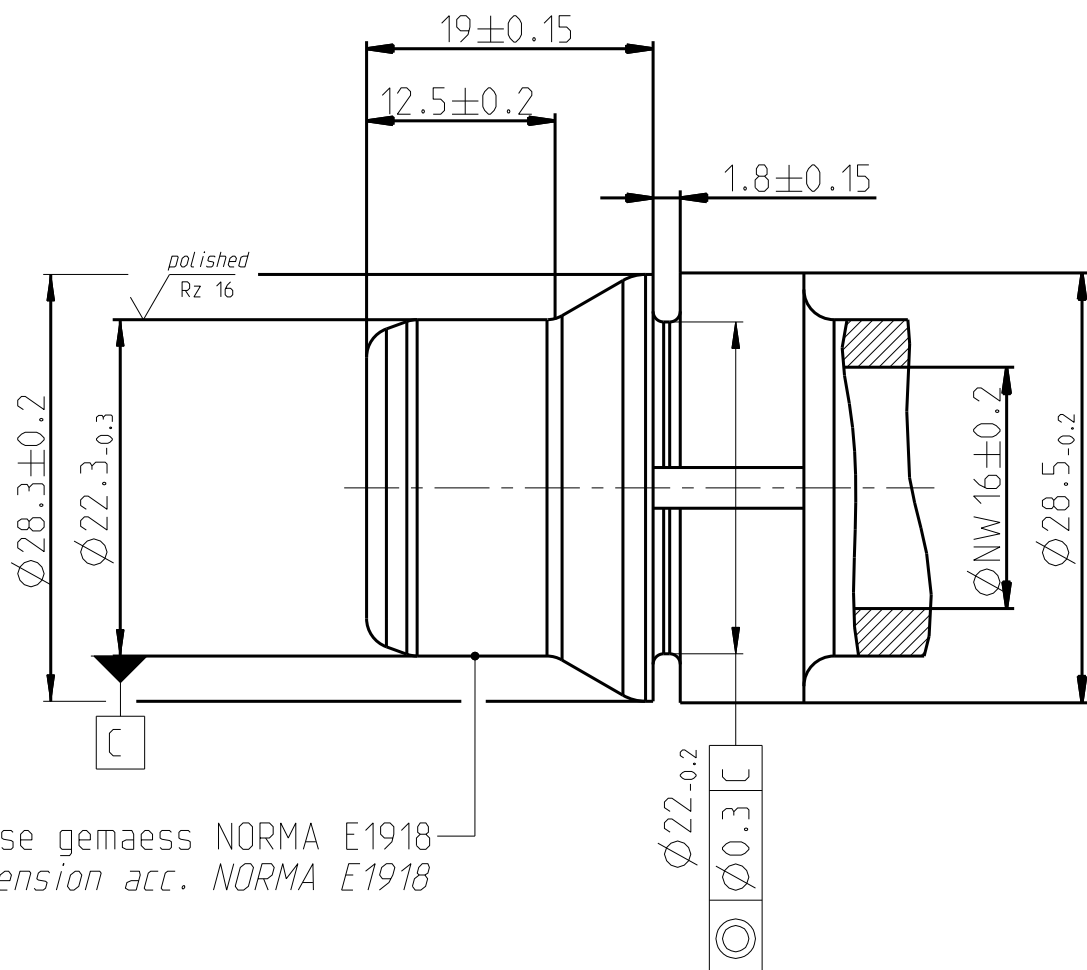
SCHNITT / SECTION A-A



MASSSTAB / SCALE 1:1



Ansicht Stutzen / View spigot
MASSSTAB / SCALE 2:1



Nicht angegebene Masse gemaess NORMA E1918
Not specified dimension acc. NORMA E1918

Performance features for NQ PS3 - VDA	
Medium	coolant water
Operation temperature	-40°C thru 135°C, short-term up to 150°C (max. 30 min. over lifetime)
Operation pressure	0 to 2 bar, partial pulsating (sinusoidal)

NORMAQUICK - ASSEMBLY MARKING	
Customer part-No.:	-
Trademark:	-
Manufacturer code:	NORMA-RSS
NORMA date code:	XX YY
Material code molding part:	>PA66-GF30<

-	-	-	-	-	-	-	-	-	-
-	C	2	1) drawing type updated; 2) view updated; 3) text added;	-	2013-01-15	Chopade	Ries	-	-
-	B	2	Komponenten korrigiert / components corrected	-	11-11-03	Reichtl	Ries	-	-
-	A	-	Drawing update for tool order	-	11-10-31	Reichtl	De Robertis	-	-
INDEX PART	Teil DWG	Anz. QTY.	Aenderung DESCRIPTION	Aend.Nr. CHANGE-NO.	Datum DATE	Bearb. DRAWN	Gepr. CHECKED		
Allgemeintoleranz: GENERAL TOLERANCE:		Form- und Lagetoleranz: FORM AND POS. TOL.:		Abmass fuer Winkel: DEVIATION FOR ANGLE:		Gewicht / WEIGHT: CALCULATED		Volumen: VOLUME:	
-		DIN ISO 2768		±2°		-		cm³	
Projektions-Methode 1 1st ANGLE PROJECTION DIN ISO 128-30		Material: see parts list		Material-No.: -		Oberflaeche: see parts list		SURF. QUAL.:	
NORMA-Patentnummer: PATENT NUMBER:		Massstab: SCALE:		Datum / DATE		Name / NAME		PART NAME:	
-		2:1		2000-09-22		Imago-Gr		NORMAQUICK PS3 NW 16	
-		-		-		Bahner		Blind plug	
-		Norm		-		-		-	
Bandlaenge: LENGTH OF BAND:		Schutzvermerk nach ISO 16016 beachten CONSIDER AFTER PROTECTION NOTICE ISO 16016		Benennung:		NORMAQUICK PS3 NW 16		Blindstopfen	
ZNE:		Kunde / CUSTOMER:		DIN A		SHEET: 1		SHEETS: 1	
Ursprung / Anfrage: ENQUIRY-No.:		NORMA Germany GmbH Postfach 1149 • 63461 Maintal		Zeichnungs-Nr. / DRAW ING-NO.:		0702 8701 016		INDEX PART DWG TYPE	
9900020032-001		COPYRIGHT BY NORMA Group		SUB.F.:		-		SUB.FROM:	
CAD-SYSTEM Pro/Engineer		DRAW ING-NAME: 07028701016_Q		MODEL-NAME: 07028701016		MODEL-TYP: ASSEM			