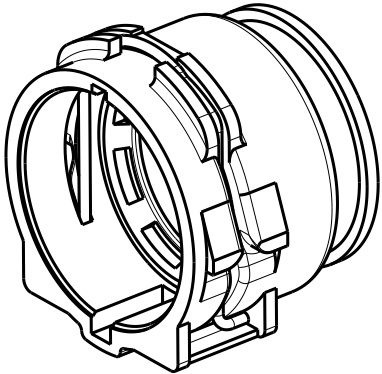
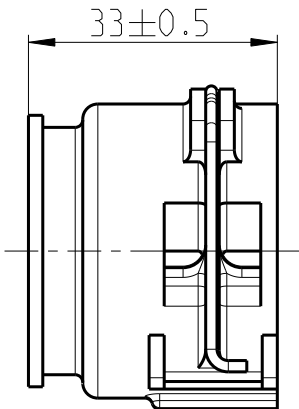
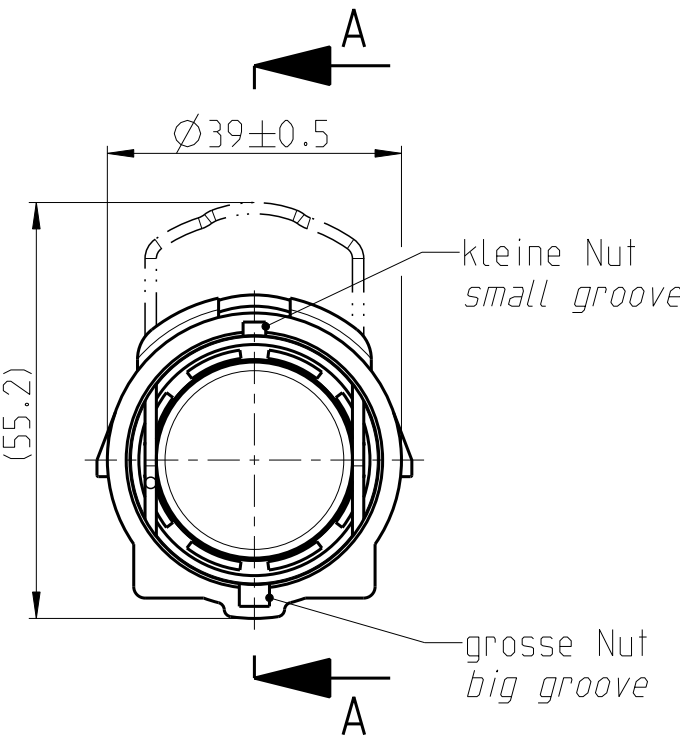
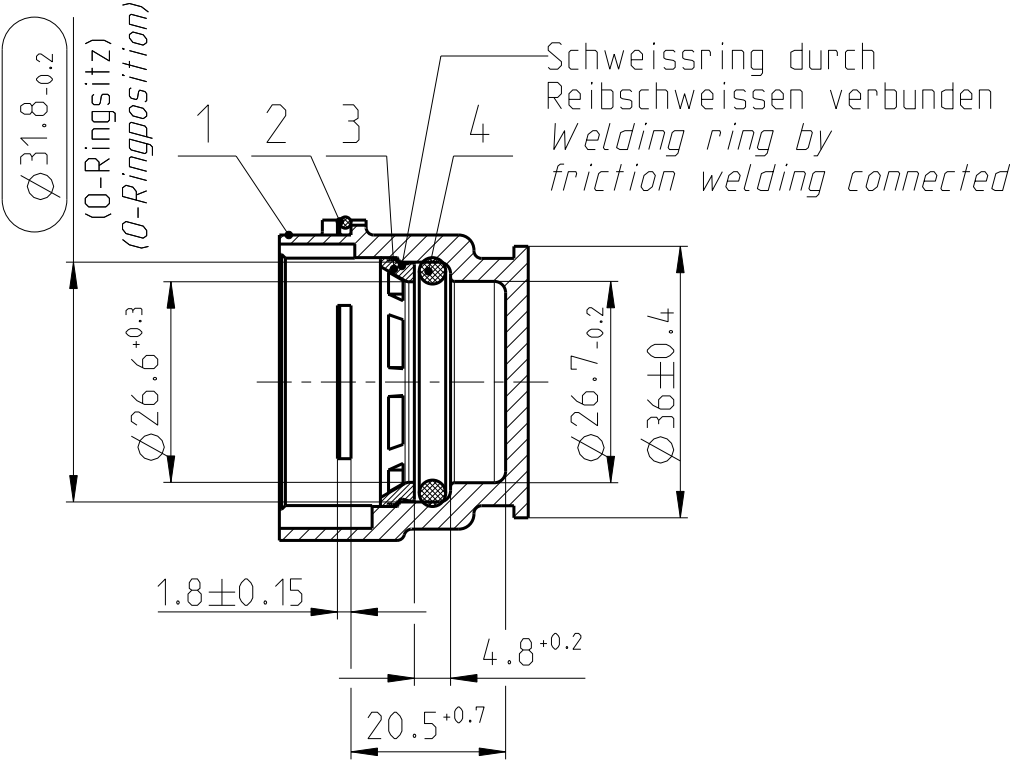


Teil-Nr ITEM-NO	Stueck QTY	Benennung PART - NAME	Werkstoff MATERIAL	Oberflaeche SURFACE
1	1	Housing NW 20	PA66-GF30	black
2	1	Locking bail NW 20	PA66-GF30	black
3	1	Weld ring NW 20	EN 10270-3 1.4310-NS-1.5	black
4	1	O-RING 26.0 X 3.5	EPDM	black

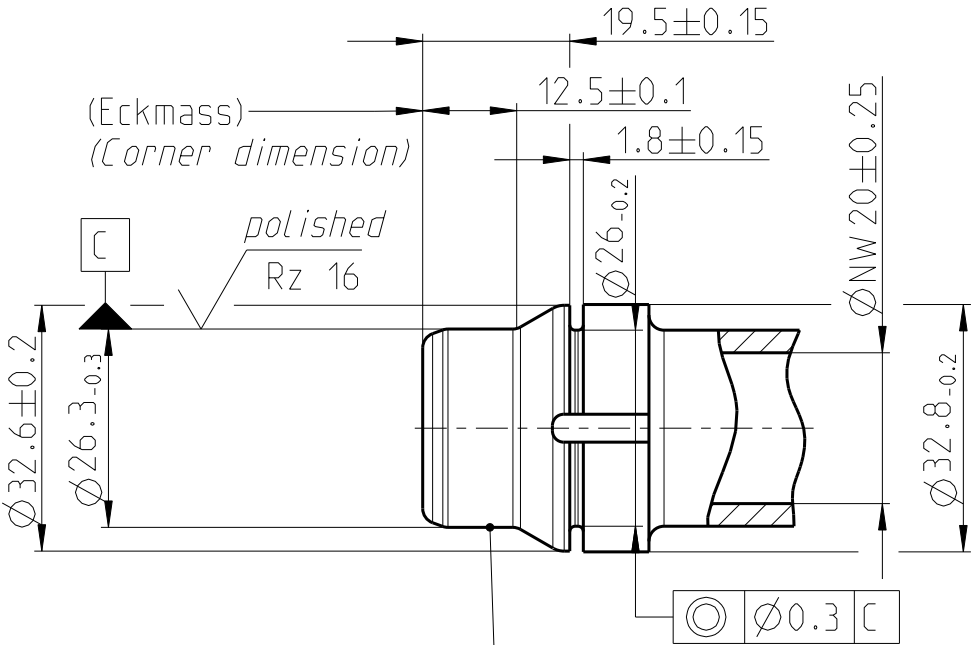
SCHNITT / SECTION A-A





MASSSTAB / SCALE 1:1

NORMAQUICK - ASSEMBLY MARKING	
Customer part-No.:	-
Trademark:	-
Manufacturer code:	NORMA
NORMA date code:	XX YY
Material code molding part:	>PA66-GF30<

Ansicht Stutzen / View Spigot
MASSSTAB / SCALE 1:1



Nicht angegebene Masse gemäss NORMA E1918
Not specified dimension acc. to NORMA E1918

-	-	-	-	-	-	-	-	-	-
-	-	-	-	-	-	-	-	-	-
1	B	-	Geometrie fuer Serie gem.: / Geometry for Serial acc.: NQPS3-VDA-NW 20 Standard (08-2012)			-	2012-09-05	TS/IC	Reuter
-	A	-	20.5+0.7 war 20.3+0.4; 1.8±0.15 war +0.15; Ø26.4-0.2 war +0.2;			604622	2006-07-31	SB/IC	Bauer
INDEX Teil PART	Zeichg DWG	Anz. QTY.	Aenderung DESCRIPTION			Aend.Nr. CHANGE-NO.	Datum DATE	Bearb. DRAWN	Gepr. CHECKED
Allgemeintoleranz: GENERAL TOLERANCE:		Form- und Lagetoleranz: FORM AND POS. TOL.:		Abmass fuer Winkel: DEVIATION FOR ANGLE:		Gewicht / WEIGHT: errechnet CALCULATED		Volumen: VOLUME:	
-		-		-		-		- cm ³	
Projektions-Methode 1 1st ANGLE PROJECTION DIN ISO 128-30		Material: see parts list				PART NAME: NORMAQUICK PS3 NW 20 blind plug // series -			
		Material-No.: see parts list -							
		Oberflaeche: see parts list SURF. QUAL.: -							
NORMA-Patentnummer: PATENT NUMBER:		Massstab: SCALE: 1:1 -		Datum/DATE		Name/NAME		Benennung: NORMAQUICK PS3 NW 20 Blindstopfen // Serie -	
		Bearb./DRAWN		2000-09-25		Imago-Gr			
		Gepr./CHECKED		2000-09-25		Bahner			
		Norm		-		-			
Bandlaenge: LENGTH OF BAND:		Schutzvermerk nach ISO 16016 beachten CONSIDER AFTER PROTECTION NOTICE ISO 16016							
ZNE:									
Ursprung/Anfrage: ENQUIRY-No.:		NORMA Germany GmbH Postfach 1149 • 63461 Maintal							
9900021009-002		© COPYRIGHT BY NORMA Group		SUB.F.: ENG 08660				SUB.FROM: Reuter	
CAD-SYSTEM Pro/Engineer		DRAWING-NAME: 07028701020_C_ANIXT				MODEL-NAME: 07028701020		MODEL-TYP: ASSEM	