



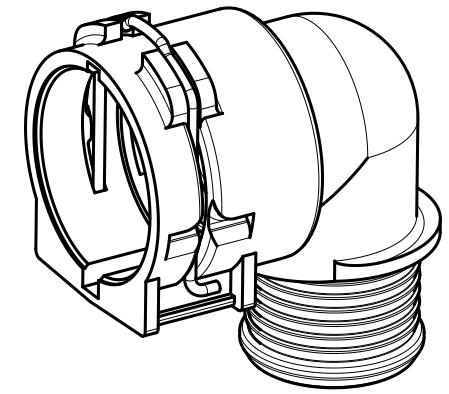
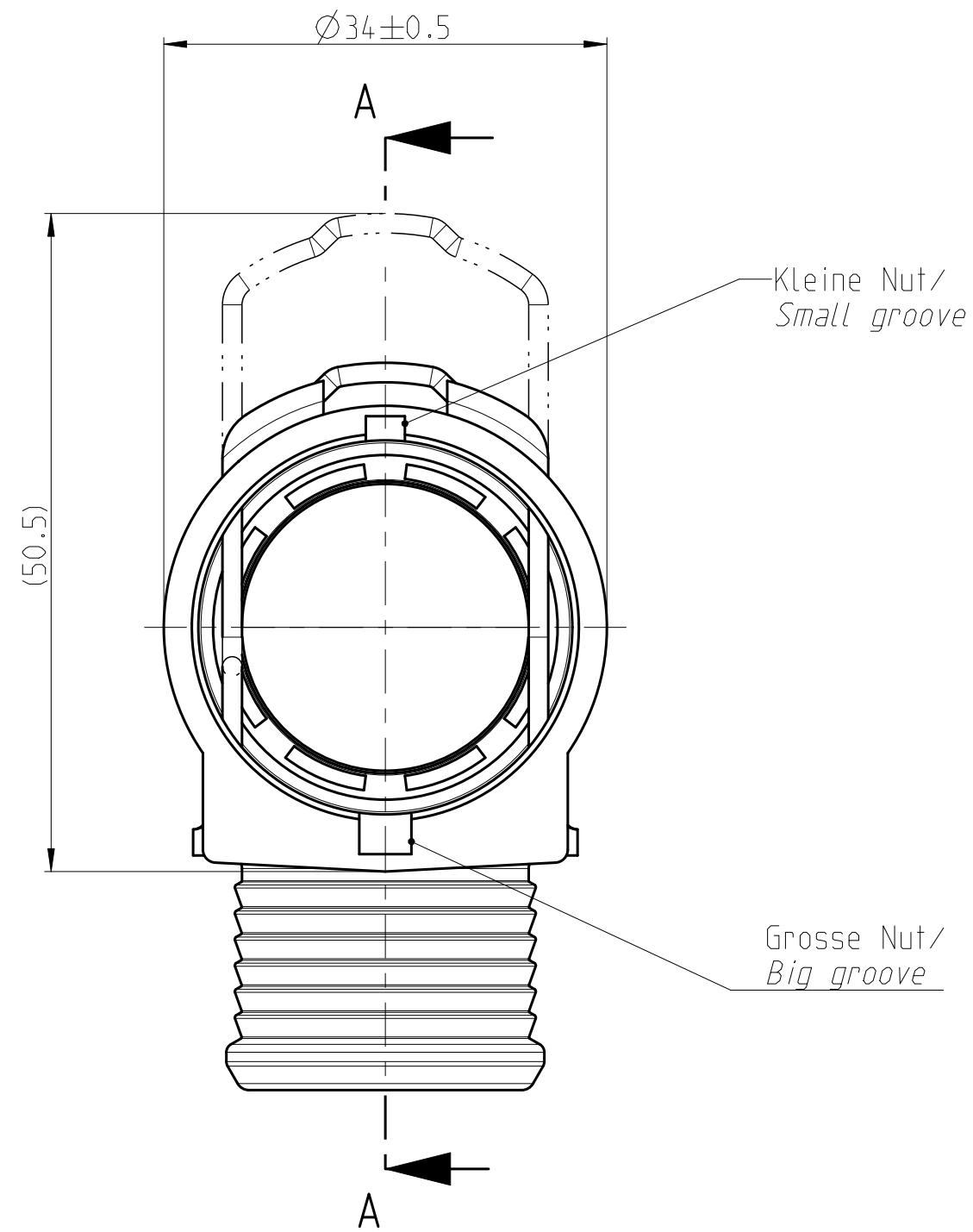
Performance features for NQ PS3 - VDA				Customer part-No.: -			
Medium		coolant water		Trademark:		-	
Operation temperature		-40°C thru 135°C, short-term up to 150°C (max. 30 min, over lifetime)		Manufacturer code:		NORMA-RSS	
Operation pressure		0 to 2 bar, partial pulsating (sinusoidal)		NORMA date code:		XX YY	
				Material code molding part:		*PA66-GF30-	

-	J	2	1) text deleted, 2) was E1918			-	2018-10-04	Reicht	Ries
-	H	1	text added			-	2016-08-31	Reicht	Ries
-	G	1	Toleranz war ±0.2 / tolerance was ±0.2			-	2013-02-04	Schindler	Ries
-	F	2	1) drawing type updated; 2) view added; 3) text added;			-	2013-01-15	Chopade	Ries
-	E	1	Bemaßung Schlauchanschluß korrigiert/dimensioning hose connection modified			-	2010-09-03	Ce-Sys/RS	Ries
-	D	2	Toleranz Ø28.7+0.5 was Ø28.7+0.2 / tolerance Ø28.7+0.5 was Ø28.7+0.2			605807	2007-08-08	Lischke	Bauer
-	C	1	Darstellung und Mass von geöffnetem Verriegelungsbuegel hinzu			605191	2007-01-24	TS/c	Bauer
-	B	-	Konfur geändert und Zeichnung ueberarbeitet			600219	2000-06-15	Imago-Gr	Bahner
-	A	-	1702 8001 016 war 1702 8002 016			600153	2000-04-04	Imago-Gr	Bahner
INDEX PART DWG QTY		REVISION SUMMARY				CHANGE-NO	DATE	DRAWN	CHECKED

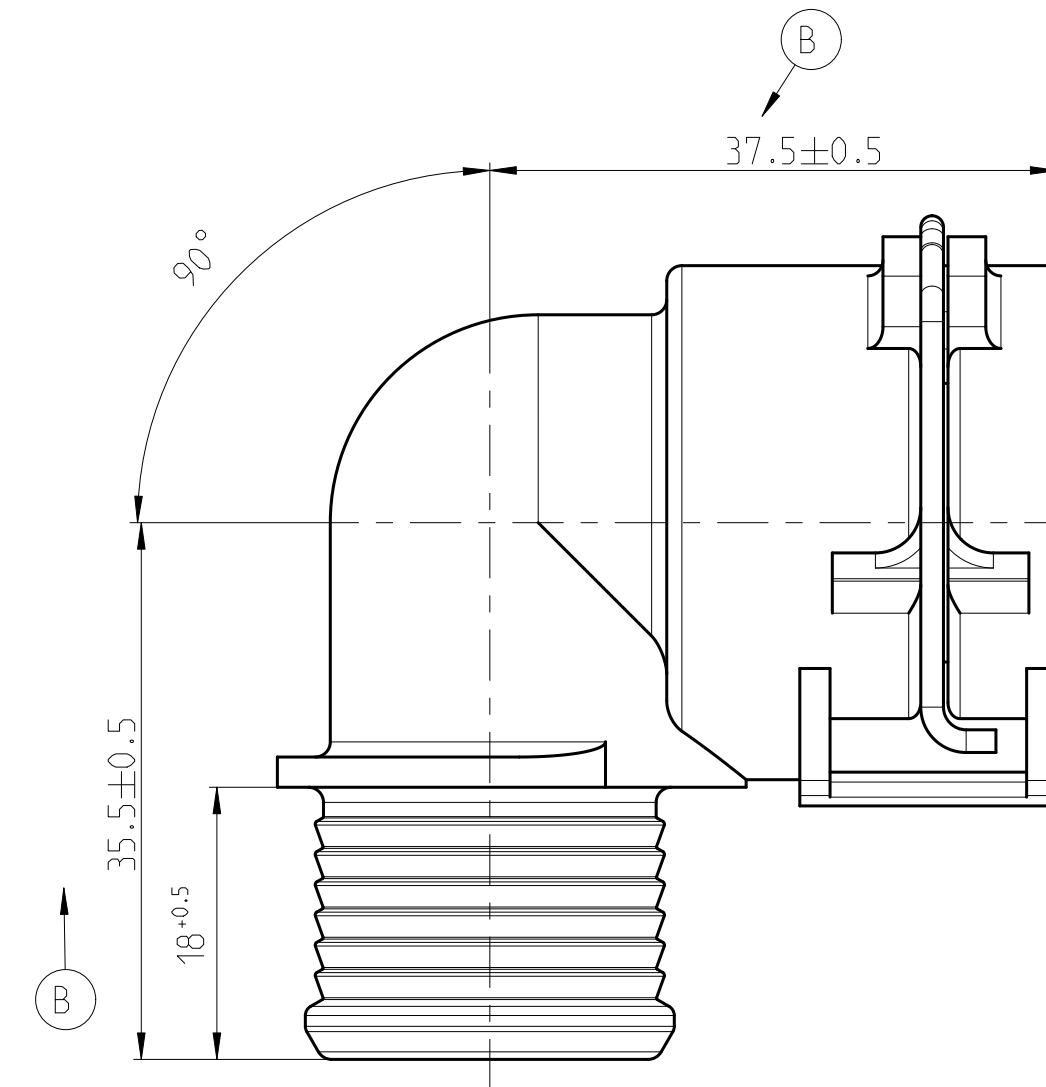
1st ANGLE PROJECTION		ACCORDING TO:		PART NAME:	
	SCALE:	DATE: YYYY-MM-DD	NAME		
	2:1	DRAWN 1999-10-28	Bauer		
	MM	CHECKED -	Bahner		
PROJECT-NO.: 9900024359-001		NORMA Germany GmbH Postfach 1149 63461 Maintal		CUSTOMER: -	
CAD-SYSTEM: Creo 3.0 M140		(C) COPYRIGHT NORMA GROUP DIN ISO 16016		CUSTOMER-NO: -	
DRAW ING-NAME.: 07028020016_Q				NORMA-NO.: 0702 8020 016	

NORMAQUICK PS3 NW 16-90 ° locking bail blank				
INDEX PART DWG	TYPE	FORMAT	SHEET	
- J	Q	A2	1/1	

Technical drawing of a mechanical part (Fig. 1) showing a cross-section. The part consists of a main body (1) and a mounting bracket (2) which is welded to the body. A screw (3) is used to secure the bracket. The bracket is shown in a cross-section with hatching. The main body has a central hole with a diameter of $\varnothing 16 \pm 0.3$ and an outer diameter of $\varnothing 24.4 \pm 0.2$. The drawing includes dimension lines and a note: "Teil mit Teil 2 verschweisst" (Part 1 and 2 welded together).



MASSSTAB/SCALE 1:1



Technical drawing of a mechanical part, likely a shaft or pin, showing dimensions and surface finish.

Dimensions and Tolerances:

- Overall length: 19 ± 0.15
- Section length: 12.5 ± 0.2
- Shoulder width: 1.8 ± 0.15
- Outer diameter (left): $\varnothing 28.5 \pm 0.2$
- Outer diameter (middle): $\varnothing 22.3 \pm 0.3$
- Inner diameter (right): $\varnothing \text{NW } 16 \pm 0.2$

Surface Finish: polished Rz 16

Feature: J2

Material Specifications:

Material	Grade	Condition	Quantity
NORMA	1702	8005	000
NORMA	1702	8005	000

J2

GENERAL TOLERANCE:	DIN 16901-130
FORM AND POS. TOL.:	-
DEVIATION FOR ANGLE:	$\pm 2^\circ$