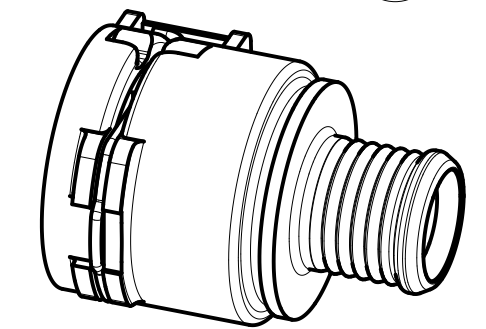
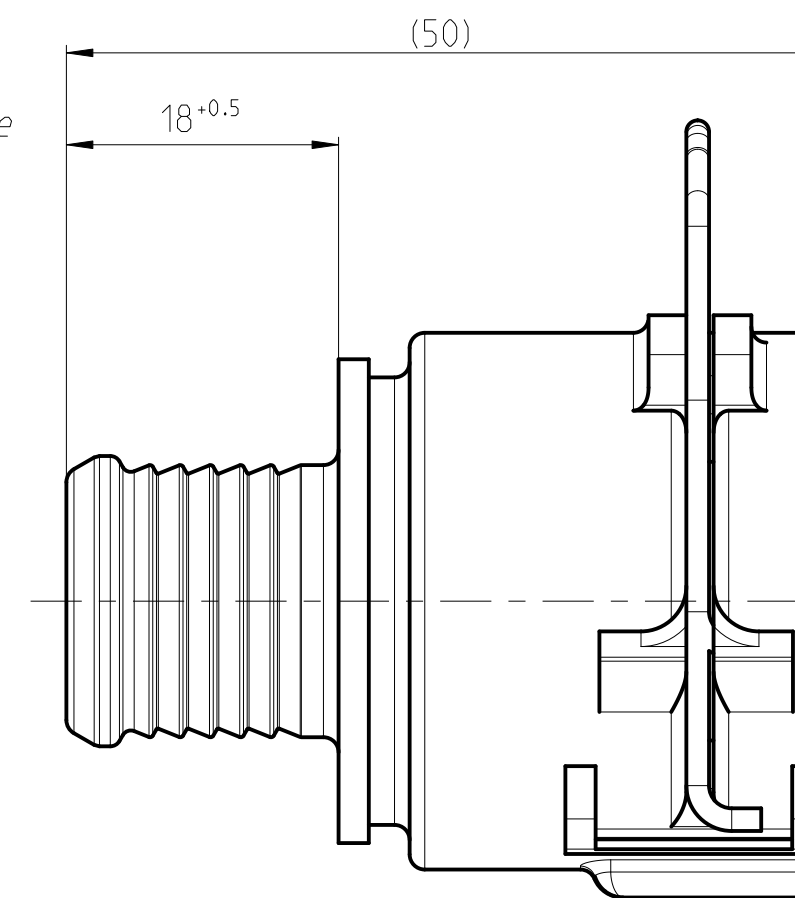


A2

Schweisssring durch Reibschweissen verbunden.
Welding ring by friction welding connected.

1 3 2 4

$\varnothing 12 \pm 0.3$
($\varnothing 16.8$)
 $\varnothing 19.2 \pm 0.2$





MASSSTAB/ SCALE 1:1

Nicht angegebene Masse gemäss NORMA E1918
Not specified dimension acc. NORMA E1918

Performance features for NQ PS3 - VDA	
Medium	coolant water
Operation temperature	-40°C thru 135°C, short-term up to 150°C (max. 30 min. over lifetime)
Operation pressure	0 to 2 bar, partial pulsating (sinusoidal)

NORMAQUICK - ASSEMBLY MARKING	
Customer part-No.:	-
Trademark:	-
Manufacturer code:	NORMA
NORMA date code:	XX YY
Material code molding part:	>PA66-GF30<

-	-	-	-			-	-	-	-	-			
-	-	-	-			-	-	-	-	-			
-	-	-	-			-	-	-	-	-			
-	A	2	Drawing seperated; 1) Marking table added; 2) Pos.3 & Pos.4 material notification was DIN 2076-1.4310-1.5 & EPDM			-	2014-02-06	Biradar	Ries				
INDEX Teil / Zeichn. PART DWG.	Anz. QTY.		Aenderung DESCRIPTION			Aend.Nr. CHANGE-NO.	Datum DATE	Bearb. DRAWN	Gepr. CHECKED				
Allgemeintoleranz: GENERAL TOLERANCE:	Form- und Lagetoleranz: FORM AND POS. TOL.:	Abmass fuer Winkel: DEVIATION FOR ANGLE:	Gewicht / errechnet/ CALCULATED	WEIGHT: gewogen actual	Volumen: VOLUME:	Pruefkenzeichnung: TEST MARKING:							
DIN 16901-130	DIN ISO 2768	±2°			-	cm ³							
Projektions-Methode 1 1st ANGLE PROJECTION DIN ISO 128-30 	Material: see parts list Material-No.: - Oberflaeche: see parts list SURF. QUAL.:	PART NAME: NORMAQUICK PS3 NW 16-12-0 ° Locking Bail blank -											
NORMA-Patentnummern: PATENT NUMBER:	Masstab: SCALE: 2:1 -	Datum/DATE	Name/NAME	Benennung: NORMAQUICK PS3 NW 16-12-0 ° Verriegelungsbuegel blank -									
	Bearb./DRAWN Gepr./CHECKED Norm	2008-10-10 2008-10-13 -	TS/IC Bauer -	Kunde/ CUSTOMER:	DIN A 2	SHEET: 1	SHEETS: 1						
Bandlaenge: LENGTH OF BAND:	Schutzvermerk nach ISO 16016 beachten CONSIDER AFTER PROTECTION NOTICE ISO 16016												
ZNE:													
Ursprung/Anfrage: ENQUIRY-No.:	NORMA Germany GmbH Postfach 1149 • 63461 Maintal												
9900017730	© COPYRIGHT BY NORMA Group												
EAD-SYSTEM Pro/Engineer	DRAW ING-NAME: 07028105016-Q												
					SUB.F.: -						SUB.FROM: -		
					MODEL-NAME: 07028105016						MODEL-TYP: ASSEM		
					Zeichnungs-Nr./DRAW ING-No.: 0702 8105 016			PART INDEX 00 0A		DWG TYPE Q			