
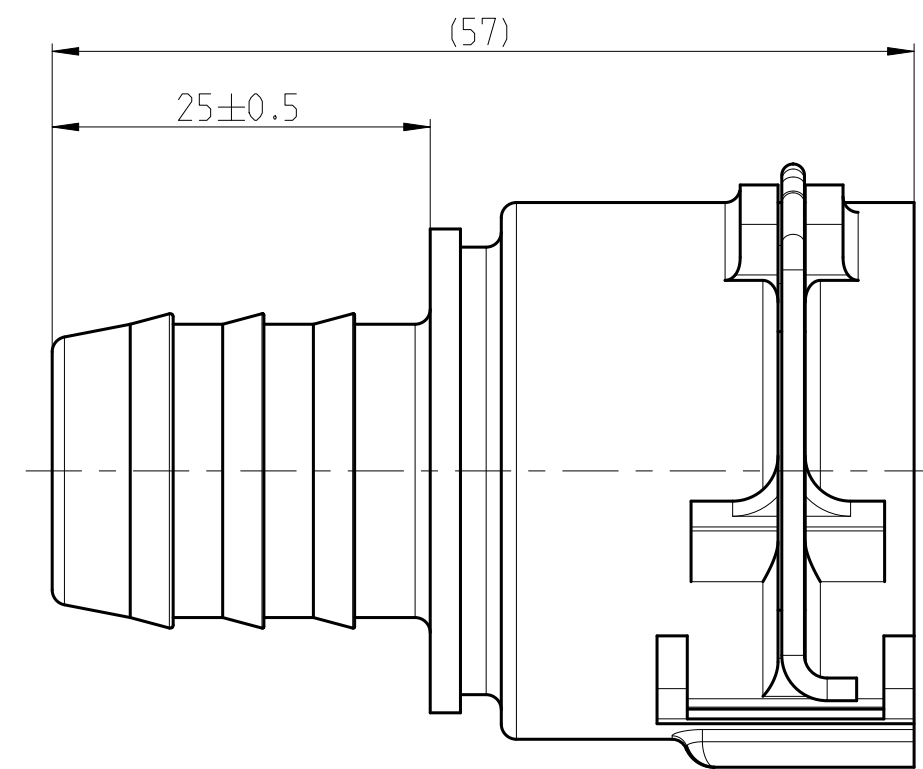


1 3 2 4




Schweissring durch
Reibschweissen verbunden
Welding ring by
friction welding connected

$\varnothing 15 \pm 0.2$
($\varnothing 19.4$)
 $\varnothing 20.8 \pm 0.2$



D2



-	E	2	Name Corrected:	-	2014-11-14	Mandalapure	Ries	
-	D	2	1) drawing type updated; 2) view updated; 3) text added	-	2013-01-15	Chopade	Ries	
-	C	1	8.5±0.2 war/was 8±0.2 Angleich an BMW Fuegetabelle / Adjustment to BMW assembling drw 1436491	-	2010-06-21	Herrmann	Ries	
-	B	1	1067 8000 247 war/was 1067 8000 847	606866	2008-07-22	CE-SYS/DM	Bauer	
-	A	1	Verriegelungsbuegel ersetzt, war 1702 8002 016	604658	2006-08-14	Schwabauer	Bauer	
INDEX Teil, PART Zeichn DWG Anz. QTY.				Aend.Nr. CHANGE-NO.		Datum DATE	Bearb. DRAWN	Gepr. CHECKED
Allgemeintoleranz: GENERAL TOLERANCE:				Aenderung DESCRIPTION		Pruefkennzeichnung: TEST MARKING:		
Form- und Lagetoleranz: FORM AND POS. TOL.:		Abmass fuer Winkel: DEVIATION FOR ANGLE:		Gewicht / WEIGHT: errechnet CALCULATED		Volumen: VOLUME:		-
DIN 16901-130		DIN ISO 2768		-		-		
Projektions-Methode 1 1st ANGLE PROJECTION DIN ISO 128-30 				Material: see parts list Material-No.: - Oberflaeche: see parts list SURF. QUAL.:		PART NAME: NORMAQUICK PS3 NW 16-0 ° Locking bail blank 		
NORMA-Patentnummer: PATENT NUMBER:		Massstab: SCALE: 2:1 -		Datum/DATE		Name/NAME		
Bandaenge: LENGTH OF BAND:		Schutzvermerk nach ISO 16016 beachten CONSIDER AFTER PROTECTION NOTICE ISO 16016		Benennung:		NORMAQUICK PS3 NW 16-0 ° Verriegelungsbuegel blank 		
ZNE:		Kunde / CUSTOMER:		Zeichnungs-Nr./DRAWING-NO.:		DIN A 2		
Ursprung/Anfrage: ENQUIRY-No.:		NORMA Germany GmbH Postfach 1149 • 63461 Maintal		SUB.F.: -		SHEET: 1		
9900014785		© COPYRIGHT BY NORMA Group		MODEL-NAME: 07028056016		MODEL-TYP: ASSEM		
CAD-SYSTEM Pro/Engineer		DRAWING-NAME: 07028056016_Q		SUB.FROM: -		SHEET: 1		