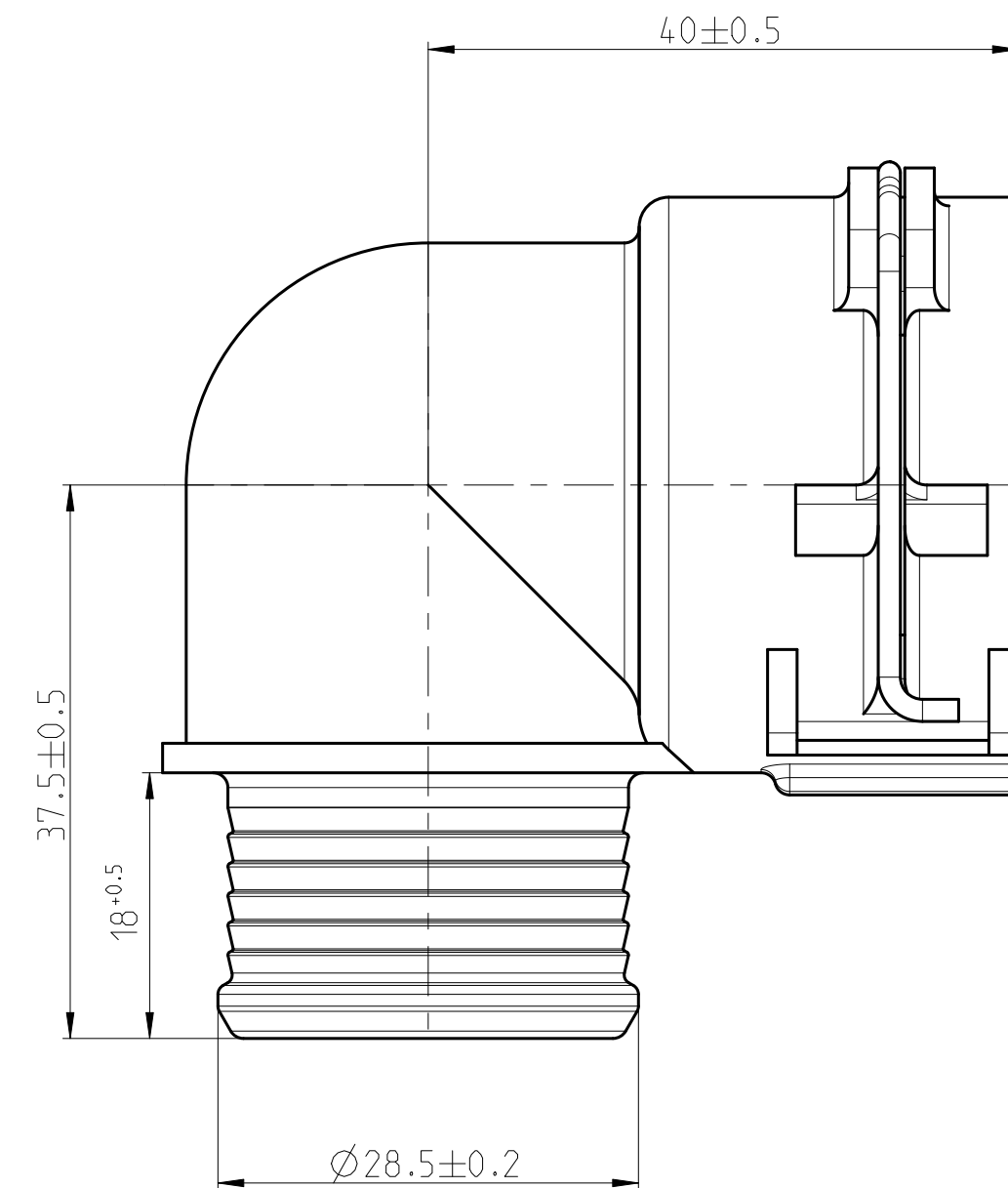
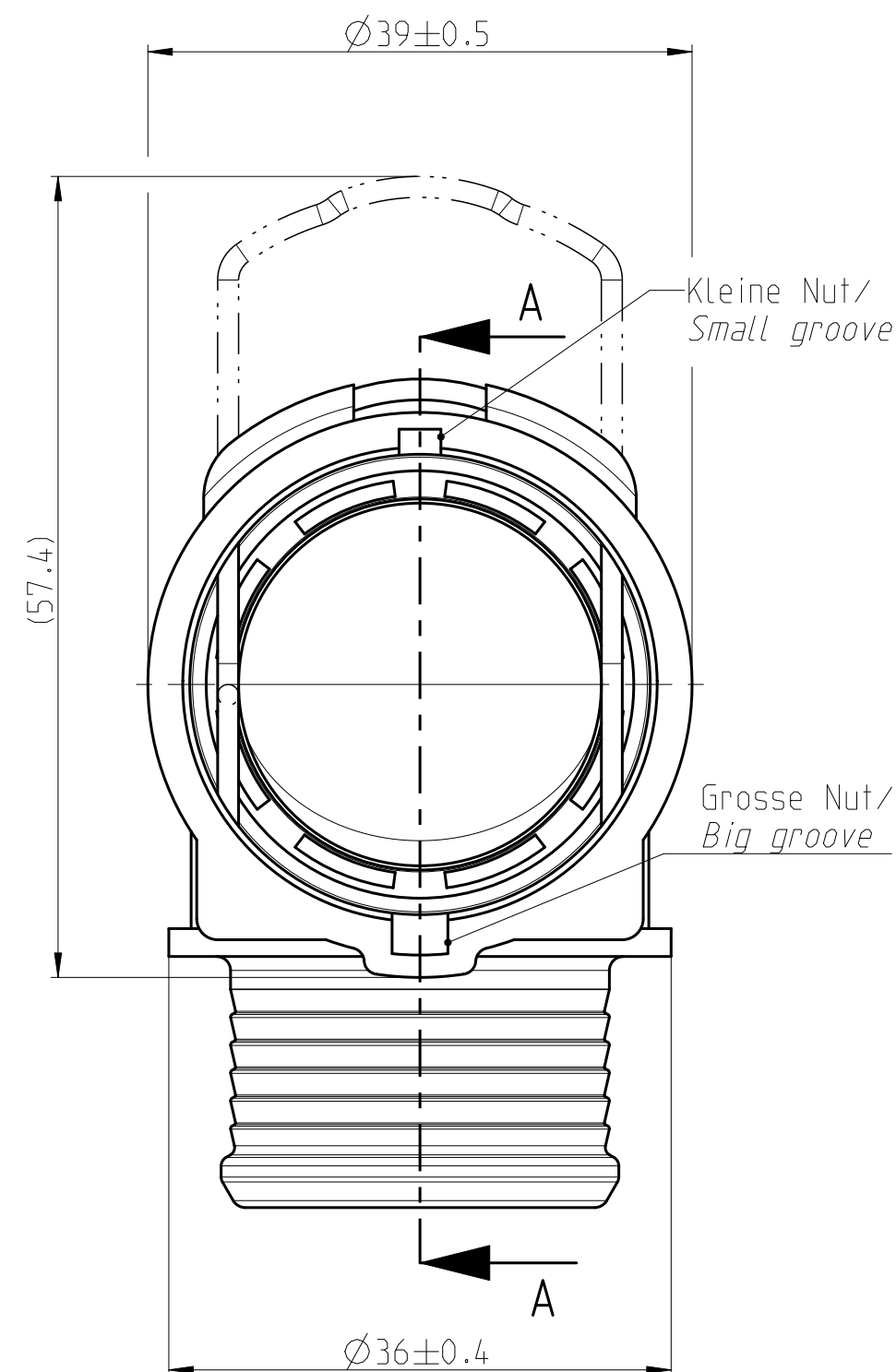


A detailed technical line drawing of a cable gland. The drawing shows the gland from a side-on perspective, highlighting its cylindrical body and the internal clamping mechanism. The clamping mechanism consists of a series of curved, overlapping segments that grip the cable. A threaded cap screw is shown at the bottom, which is used to tighten the gland against the cable. The drawing is a black and white line art, typical of technical manuals.

SCHNITT/SECTION A-A



Technical drawing of a mechanical part, likely a bearing or bush, showing dimensions and material specifications.



Dimensions and Tolerances:

- Outer Diameter: $\varnothing 32.6 \pm 0.2$
- Inner Diameter: $\varnothing 26.3 \pm 0.3$
- Polished Surface: Rz 16
- Lengths: 19.5 ± 0.15 , 12.5 ± 0.1 , 1.8 ± 0.15
- Overall Length: $\varnothing 32.8 \pm 0.2$
- Internal Feature: $\varnothing 26_{-0.2}^{0}$
- Internal Feature: $\varnothing 0.3$
- Internal Feature: $\varnothing_{NW} 20 \pm 0.25$

Material: NORMA E1918 acc. NORMA E1918

GENERAL TOLERANCE:	DIN 16901-130
FORM AND POS. TOL.:	DIN ISO 2768
DEVIATION FOR ANGLE:	$\pm 2^\circ$

NORMAQUICK - ASSEMBLY MARKING	
Customer part-No.:	-
Trademark:	-
Manufacturer code:	NORMA-RSS
NORMA date code:	XX YY
Material code molding part:	>PA66-GF30<

-	-	-	-	-	-	-	-	-	-	
-	-	-	-	-	-	-	-	-	-	
-	B	-	Drawing updated & sheet 2 removed;			-	2020-12-10	A.Tikambare	Dygon	
-	A	2	1) drawing type updated; 2) view updated; 3) text added			-	2013-01-15	Chopade	Ries	
INDEX PART	DWG	QTY	REVISION SUMMARY			CHANGE-NO	DATE	DRAWN	CHECKED	
1st ANGLE PROJECTION		ACCORDING TO: -				PART NAME:				
		SCALE: 2:1 MM	DATE: YYYY-MM-DD DRAWN 2000-02-18 CHECKED -	NAME Bauer Bahner		NORMAQUICK PS3 NW 20-90 ° -				
PROJECT-NO.: 9900021163-001		NORMA Germany GmbH Postfach 1149 63461 Maintal 				CUSTOMER: -		CUSTOMER-NO: -		
CAD-SYSTEM: Creo 3.0 M140		(C) COPYRIGHT NORMA GROUP DIN ISO 16016				NORMA-NO.: 0702 8004 020		PART INDEX - B	DWG TYPE Q	FORMAT SHEET A2 1/1
DRAWING-NAME.: 07028004020_Q										