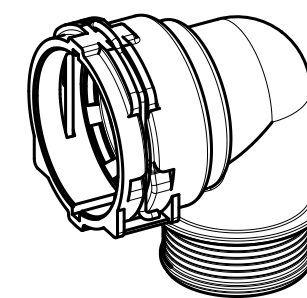


Technical drawing of a mechanical part, likely a valve or actuator, showing a side view and a cross-sectional view.

The side view includes the following dimensions:

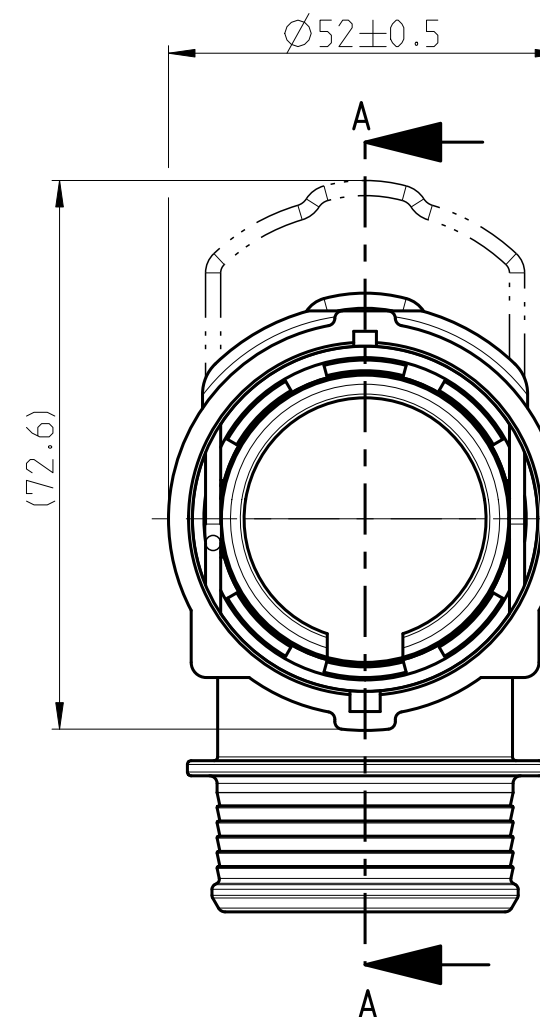
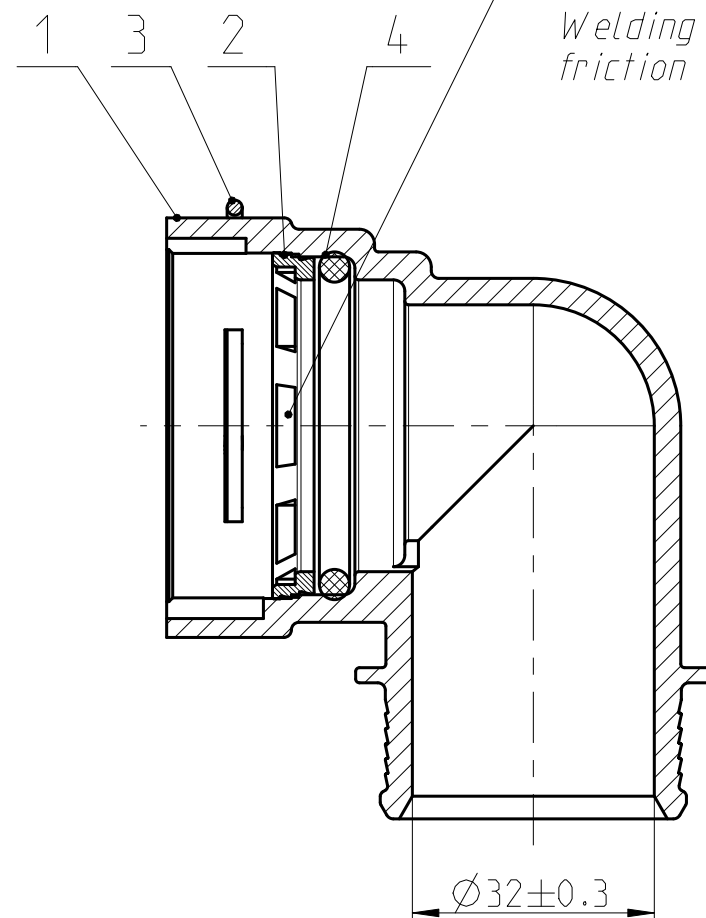
- Total height: 52 ± 0.5
- Base height: 18 ± 0.5
- Horizontal distance: 48.5 ± 0.5
- Angle: 90°

The cross-sectional view shows internal components, including a piston and a valve stem.

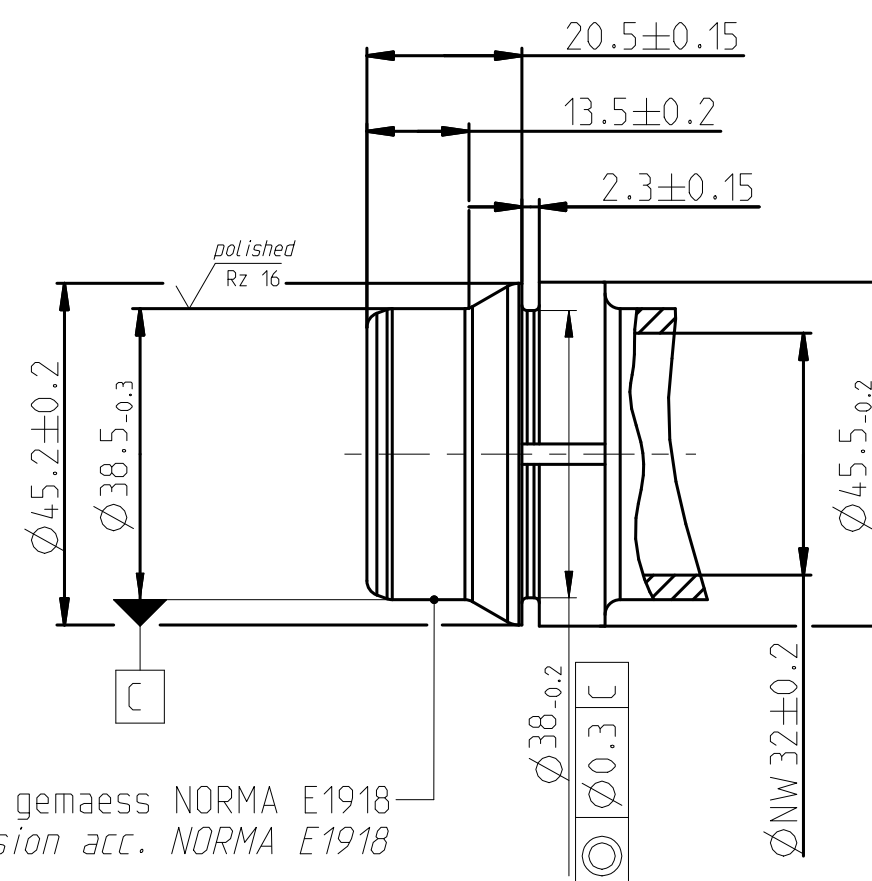


MASSSTAB/SCALE 1:2

—Schweissring durch
Reibschweissen verbunden.
*Welding ring by
friction welding connected.*





A2



		0.3	
---	---	-----	---

NORMAQUICK - ASSEMBLY MARKING	
Customer part-No.:	-
Trademark:	-
Manufacturer code:	NORMA-RSS
NORMA date code:	XX YY
Material code molding part:	>P466-GF30<

-	-	-	-	-	-	-	-	-	-
-	-	-	-	-	-	-	-	-	-
-	-	-	-	-	-	-	-	-	-
-	A	2	1) drawing type updated; 2) view updated; 3) text added			-	2013-01-15	Chopade	Ries
INDEX Teil / PART	Zeichn DWG	Anz. QTY.	Änderung DESCRIPTION			Änd.Nr. CHANGE-NO.	Datum DATE	Bearb. DRAWN	Gepr. CHECKED
Allgemeintoleranz: GENERAL TOLERANCE:			Form- und Lagetoleranz: FORM AND POS. TOL.:	Abmass fuer Winkel: DEVIATION FOR ANGLE:	Gewicht errechnet CALCULATED	/ WEIGHT: gewogen actual	Volumen: VOLUME:	Pruefkenzeichnung: TEST MARKING:	
DIN 16901-130			DIN ISO 2768	±2 °	-	-	- cm ³		
Projektions-Methode 1 1st ANGLE PROJECTION DIN ISO 128-30			Material: see parts list			PART NAME:			
			Material-No.: -			NORMAQUICK PS3 NW 32-90 °			
			Oberflaeche: see parts list			-			
			SURF. QUAL.: -			-			
NORMA-Patentnummer: PATENT NUMBER:			Masstab: SCALE:	Datum/DATE	Name/NAME	Benennung:			
			Bearb./DRAWN	2008-03-11	CE-Sys/DM	NORMAQUICK PS3 NW 32-90 °			
			Gepr./CHECKED	2008-03-13	Bauer	-			
			Norm	-	-	-			
Bandlaenge: LENGTH OF BAND:			Schutzvermerk nach ISO 16016 beachten NOTICE AFTER PROTECTION NOTE ISO 16016						
ZNE:									
Ursprung/Anfrage: ENQUIRY-No.:			Zeichnungs-Nr./DRAW ING.-No.:						
9901717601			0702 8042 032						
CAD-SYSTEM Pro/Engineer			DRAW ING-NAME: 07028042032_Q			SUB.F.:		SUB.FROM:	
			MODEL-NAME: 07028042032			MODEL-TYP: ASSEM			