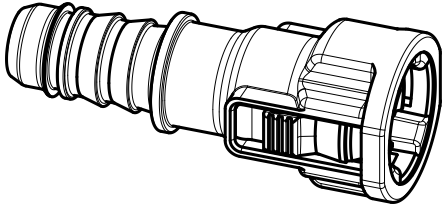
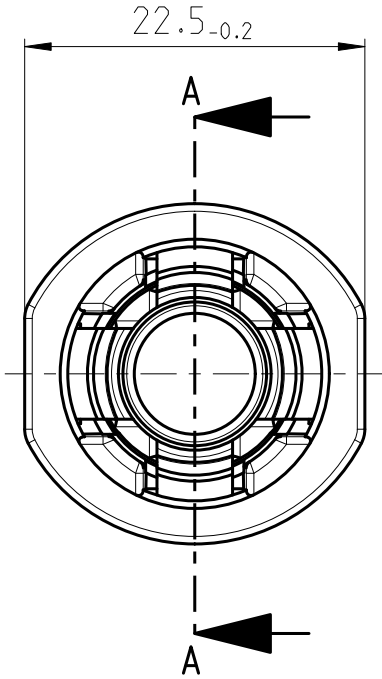
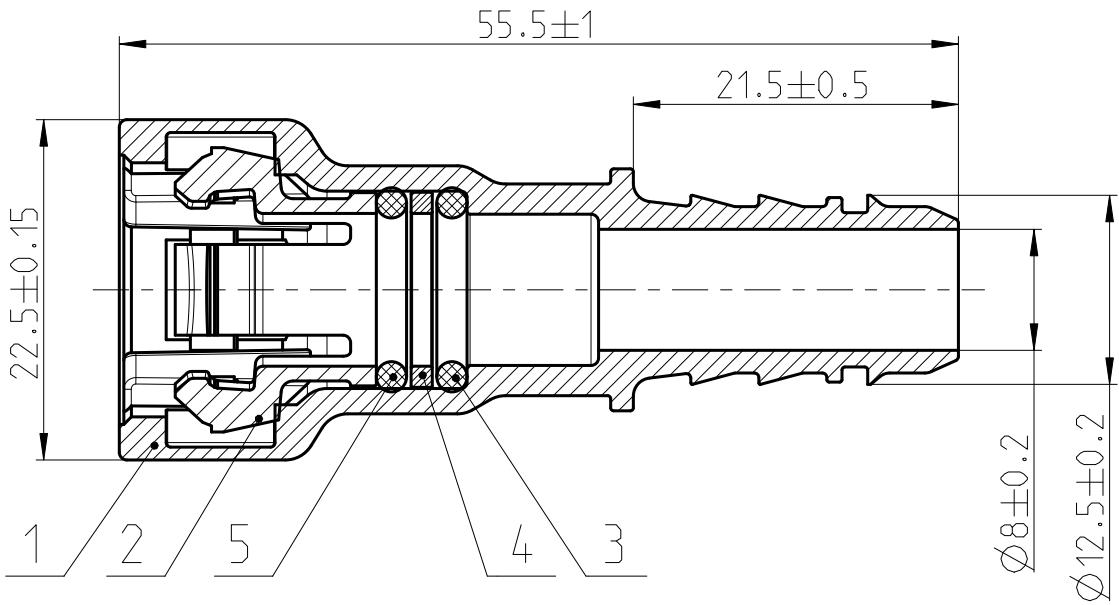


Angebotszeichnung *QUOTATION DRAWING*

Teil-Nr <i>ITEM-NO</i>	Stueck <i>QTY</i>	Benennung <i>PART - NAME</i>	Werkstoff <i>MATERIAL</i>	Oberflaeche <i>SURFACE</i>
1	1	NORMAQUICK S NW 10-10-0 *	PA12-GF50	black
2	1	Retaining spring NW 10	PA12-GF30	black
3	1	O-RING 9.5 X 2.0	FPM	black
4	1	Spacer NW 10	PA6-GF30	black
5	1	O-RING 9.5 X 2.0	FVNQ	yellow

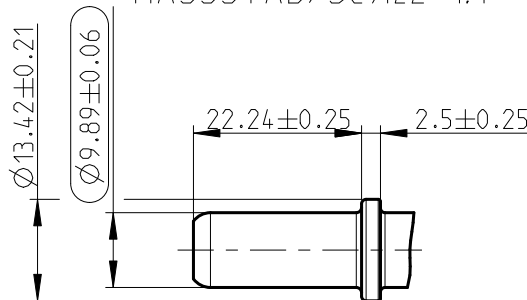
SCHNITT / SECTION A-A



MASSSTAB/SCALE 1:1

NORMAQUICK - ASSEMBLY MARKING	
Customer part-No.:	-
Trademark:	-
Manufacturer code:	NORMA-RSS
NORMA date code:	XX YY
Material code molding part:	>PA12-GF50<

Anschlusstutzen/connecting spigot
gemaess/accordant SAE J2044
MASSSTAB/SCALE 1:1



-	-	-	-			-	-	-	-		
-	-	-	-			-	-	-	-		
-	-	-	-			-	-	-	-		
-	-	-	-			-	-	-	-		
INDEX Teil PART	Zeichg DWG	Anz. QTY.	Anderung DESCRIPTION			Aend.Nr. CHANGE-NO.	Datum DATE	Bearb. DRAWN	Gepr. CHECKED		
Allgemeintoleranz: GENERAL TOLERANCE:		Form- und Lagetoleranz: FORM AND POS. TOL.:		Abmass fuer Winkel: DEVIATION FOR ANGLE:		Gewicht / WEIGHT: errechnet CALCULATED		gewogen actual		Volumen: VOLUME:	Pruefkennzeichnung: TEST MARKING:
DIN 16901-130		DIN ISO 2768		±2 °		-		-		- cm ³	
Projektions-Methode 1 1st ANGLE PROJECTION DIN ISO 128-30 		Material: see parts list				PART NAME: NORMAQUICK S NW 10-10-0 ° 4-Arm-Retaining spring black fuer SAE-Spigot Ø9.89 mm					
Material-No.: see parts list											
Oberflaeche: see parts list SURF. QUAL.: DIN ISO 1302											
NORMA-Patentnummer: PATENT NUMBER:		Masstab: SCALE: 2:1 -		Datum/DATE	Name/NAME	Benennung: NORMAQUICK S NW 10-10-0 ° 4-Arm-Haltefeder schwarz fuer SAE-Stutzen Ø9.89 mm					
		Bearb./DRAWN	2013-05-23	Reichl							
		Gepr./CHECKED	2013-05-27	Jacksteit							
		Norm	-	-	-						
Bandlaenge: LENGTH OF BAND:			Schutzvermerk nach ISO 16016 beachten CONSIDER AFTER PROTECTION NOTICE ISO 16016			Kunde/CUSTOMER: DIN A 3 SHEET: 1 1 Zeichnungs-Nr./DRAWING-NO.: 0715 8723 010 INDEX PART DWG TYPE 00 00 Q					
ZNE:			 NORMA Germany GmbH Postfach 1149 • 63461 Maintal © COPYRIGHT BY NORMA Group								
Ursprung/Anfrage: ENQUIRY-No.: 9900021621-022											
CAD-SYSTEM Pro/Engineer			DRAWING-NAME: 07158723010_Q			MODEL-NAME: 07158723010			MODEL-TYP: ASSEM		