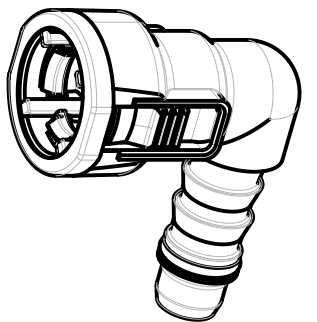
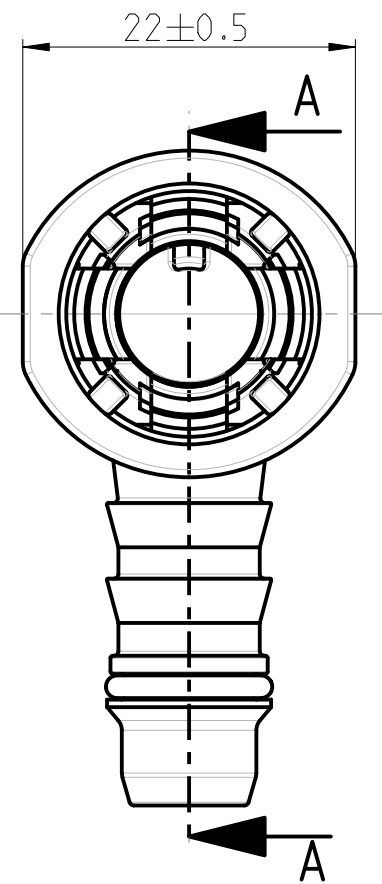
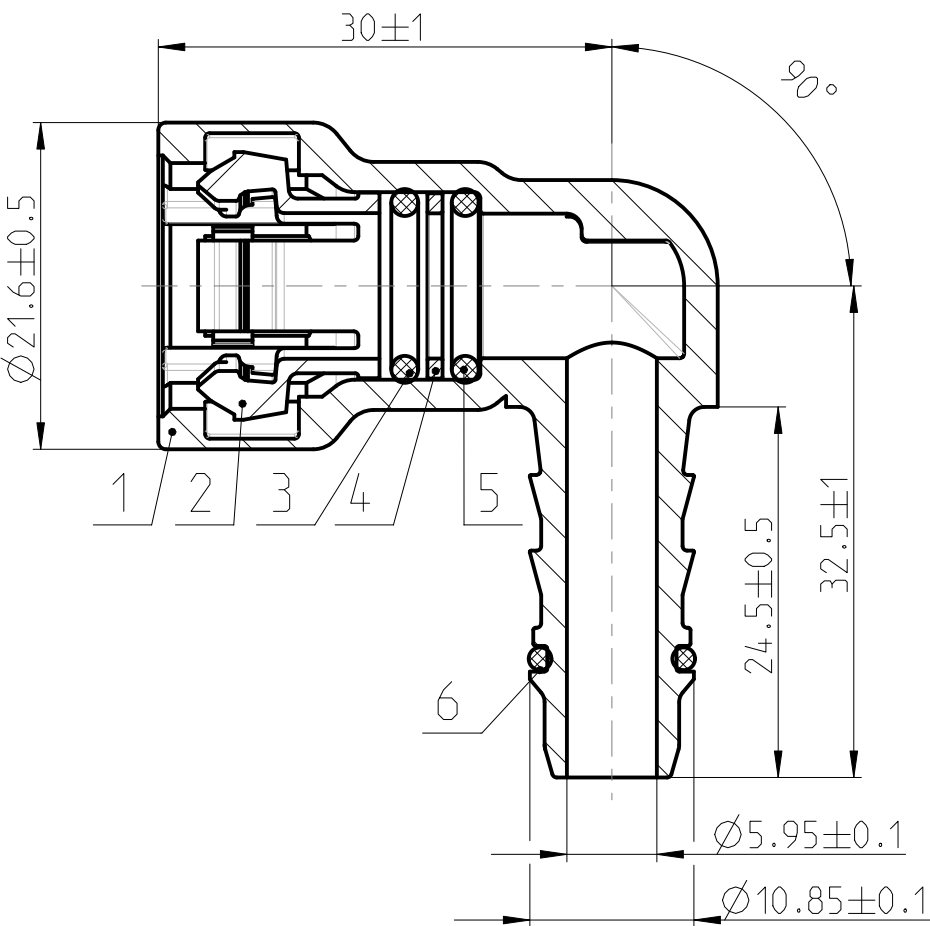


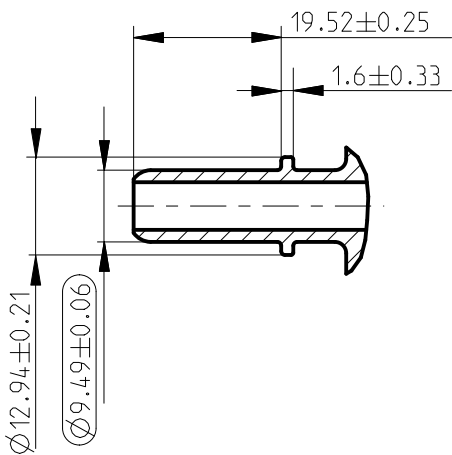
Angebotszeichnung
QUOTATION DRAWING

SCHNITT / SECTION A-A






MASSSTAB / SCALE 1:1

Anschlussstutzen / Connecting spigot
gemaess / acc. to SAE J2044
MASSSTAB / SCALE 1:1



Teil-Nr ITEM-NO	Stueck QTY	Benennung PART - NAME	Werkstoff MATERIAL	Oberflaeche SURFACE
1	1	Housing NW 3/8"-5/16''-90°	PA12-GF50	black
2	1	Retainer NW 3/8''	PA12-GF30	black
3	1	O-RING 9.25 X 1.78	FVMQ	blue
4	1	Spacer NW 3/8''	PA6-GF30	black
5	1	O-RING 9.25 X 1.78	FPM	black
6	1	O-RING 8.0 X 1.5	FPM	black

NORMAQUICK - ASSEMBLY MARKING	
Customer part-No.:	-
Trademark:	-
Manufacturer code:	NORMA RSS
NORMA date code:	XX YY
Material code molding part:	>PA12-GF50<

-	-	-	-	-	-	-	-
-	B	1	1) Drawing separated; 2) Marking table added	-	2013-06-12	Guru	Kaya
-	A	-	Gehaeuse geaendert	01-603160	2005-04-07	ibb/SaKe	Bahlke
INDEX Teil PART	Zeichg DWG	Anz. QTY.	Aenderung DESCRIPTION	Aend.Nr. CHANGE-NO.	Datum DATE	Bearb. DRAWN	Gepr. CHECKED
Allgemeintoleranz: GENERAL TOLERANCE:		Form- und Lagetoleranz: FORM AND POS. TOL.:		Abmass fuer Winkel: DEVIATION FOR ANGLE:		Gewicht / WEIGHT: errechnet CALCULATED	
-		-		±2°		-	
Projektions-Methode 1 1st ANGLE PROJECTION DIN ISO 128-30		Material: see parts list		PART NAME:		Volumen: VOLUME:	
		Material-No.: -		NORMAQUICK S NW 3/8''-5/16'', 90°		-	
		Oberflaeche: see parts list					
		SURF. QUAL.:					
NORMA-Patentnummer: PATENT NUMBER:		Massstab: SCALE:		Datum/DATE	Name/NAME	Pruefkennzeichnung: TEST MARKING:	
		2:1		2002-01-08	Imago-Gr		
		-		-	Bock		
		-		-	-		
Bandlaenge: LENGTH OF BAND:		Schutzvermerk nach ISO 16016 beachten CONSIDER AFTER PROTECTION NOTICE ISO 16016					
ZNE:							
Ursprung/Anfrage: ENQUIRY-No.:		NORMA Germany GmbH Postfach 1149 • 63461 Maintal					
9990008285							
CAD-SYSTEM Pro/Engineer		© COPYRIGHT BY NORMA Group					
DRAWING-NAME: 07158519010_Q		SUB.F.:					
MODEL-NAME: 07158519010		SUB.FROM:					
MODEL-TYP: ASSEM							