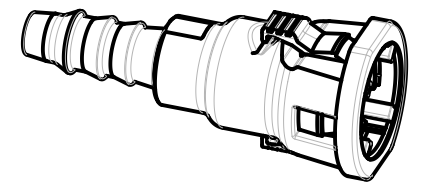
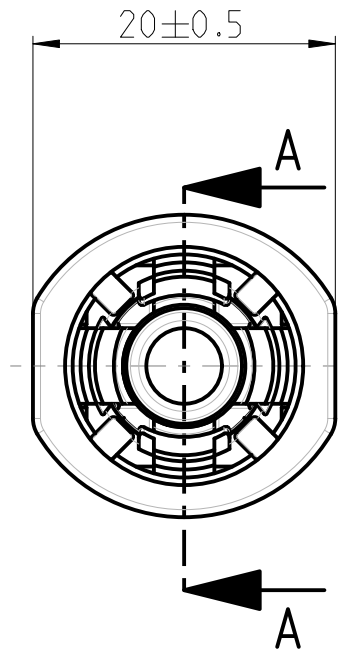
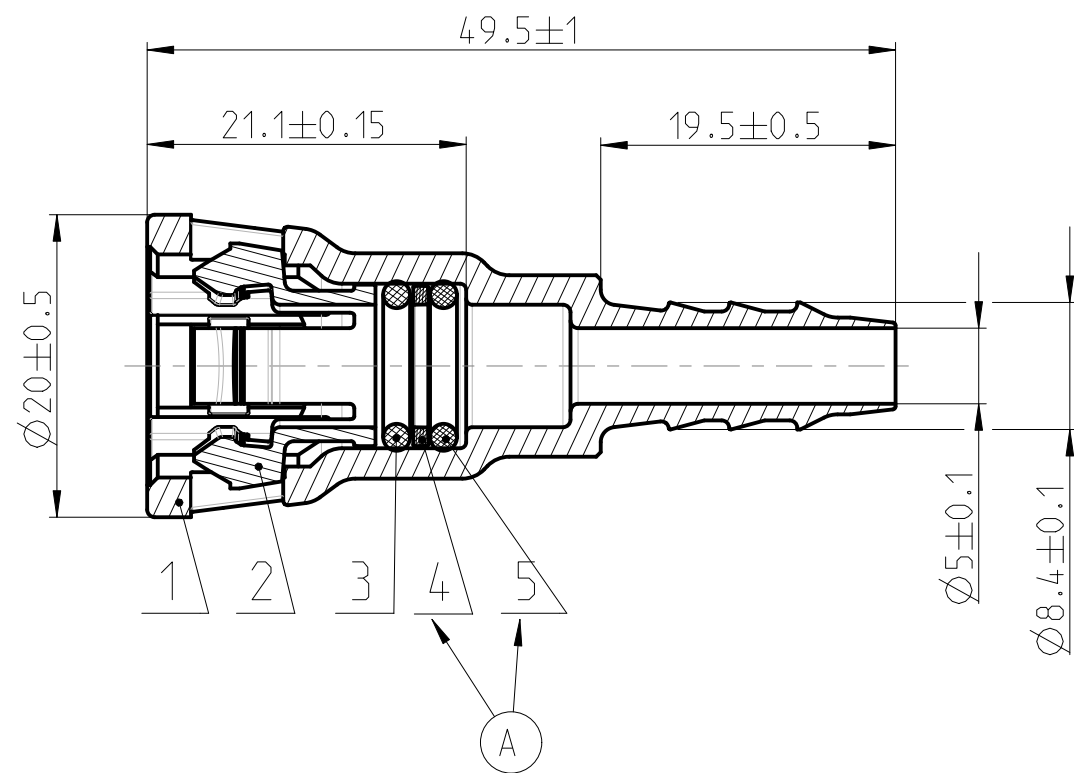


Angebotszeichnung
QUOTATION DRAWING

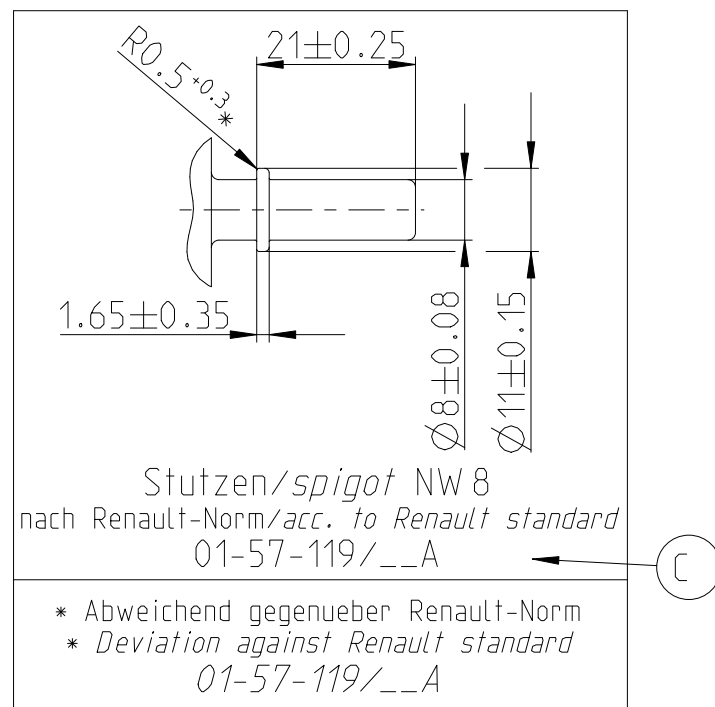
SCHNITT / SECTION A-A



MASSTAB / SCALE 1:1

D1

NORMAQUICK - ASSEMBLY MARKING	
Customer part-No.:	-
Trademark:	-
Manufacturer code:	NORMA EU
NORMA date code:	XX YY
Material code molding part:	>PA12-GF30<



-	D	1	Drawing separated; 1) Marking table added;	-	2013-12-13	Mandalapure	Jacksteit
-	C	1	Anschlussstutzen zgf.	602913	2005-01-17	Schwab.	Bahlke
-	B	-	Rippen verlaengert	601569	2003-02-11	SB/SK	Bock
-	A	1	O-Ringe - Teil-Nr. 3 und 5 getauscht	601340	2002-09-27	Imago-Gr	Bock
INDEX Teil PART	Zeichg DWG	Anz. QTY.	Aenderung DESCRIPTION	Aend.Nr. CHANGE-NO.	Datum DATE	Bearb. DRAWN	Gepr. CHECKED
Allgemeintoleranz: GENERAL TOLERANCE:		Form- und Lagetoleranz: FORM AND POS. TOL.:		Abmass fuer Winkel: DEVIATION FOR ANGLE:		Gewicht / WEIGHT: errechnet CALCULATED	
DIN 16901-130		DIN ISO 2768		$\pm 2^\circ$		-	
Projektions-Methode 1 1st ANGLE PROJECTION DIN ISO 128-30		Material: see parts list		PART NAME:		Pruefkenzeichnung: TEST MARKING:	
		Material-No.: -		NORMAQUICK S NW 8-6, 0°			
		Oberflaeche: see parts list		Version EUR		4-arm-retaining spring, yellow	
		SURF. QUAL.:		Benennung:		NORMAQUICK S NW 8-6, 0°	
NORMA-Patentnummer: PATENT NUMBER:		Massstab: SCALE:		Datum/DATE		Ausfuehrung EUR	
		2:1		2002-04-29		4-Arm-Haltefeder, gelb	
		-		AW /SK		Kunde / CUSTOMER:	
		Norm		Bock		DIN A	
				-		3	
Bandlaenge: LENGTH OF BAND:		Schutzvermerk nach ISO 16016 beachten CONSIDER AFTER PROTECTION NOTICE ISO 16016		Zeichnungs-Nr./DRAWING-NO.:		SHEET: SHEETS	
ZNE:				0715 8520 008		1	
Ursprung/Anfrage: ENQUIRY-No.:		NORMA Germany GmbH Postfach 1149 • 63461 Maintal		SUB.F.:		INDEX	
9990001460		© COPYRIGHT BY NORMA Group		-		PART DWG	
CAD-SYSTEM Pro/Engineer		DRAWING-NAME: 07158520008_Q		MODEL-NAME: 07158520008		00	
				SUB.FROM:		TYPE	
				-		Q	
				MODEL-TYP: ASSEM			