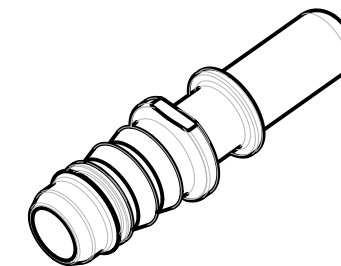
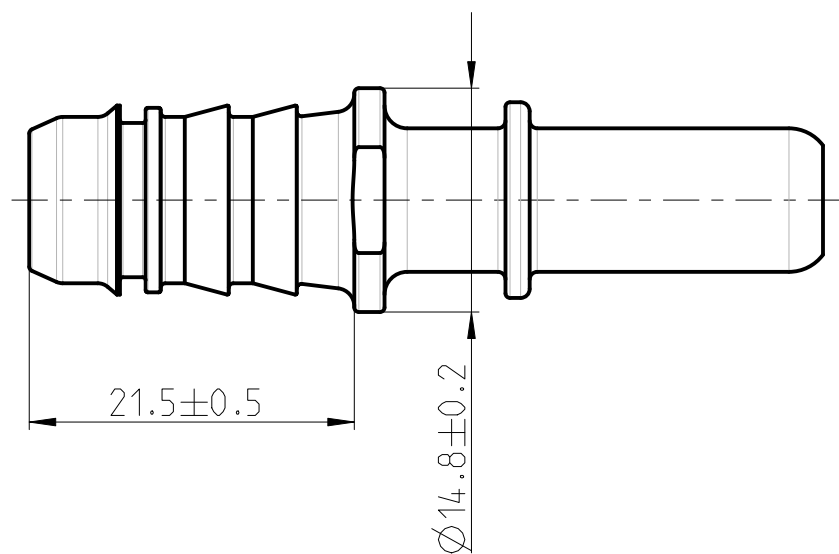
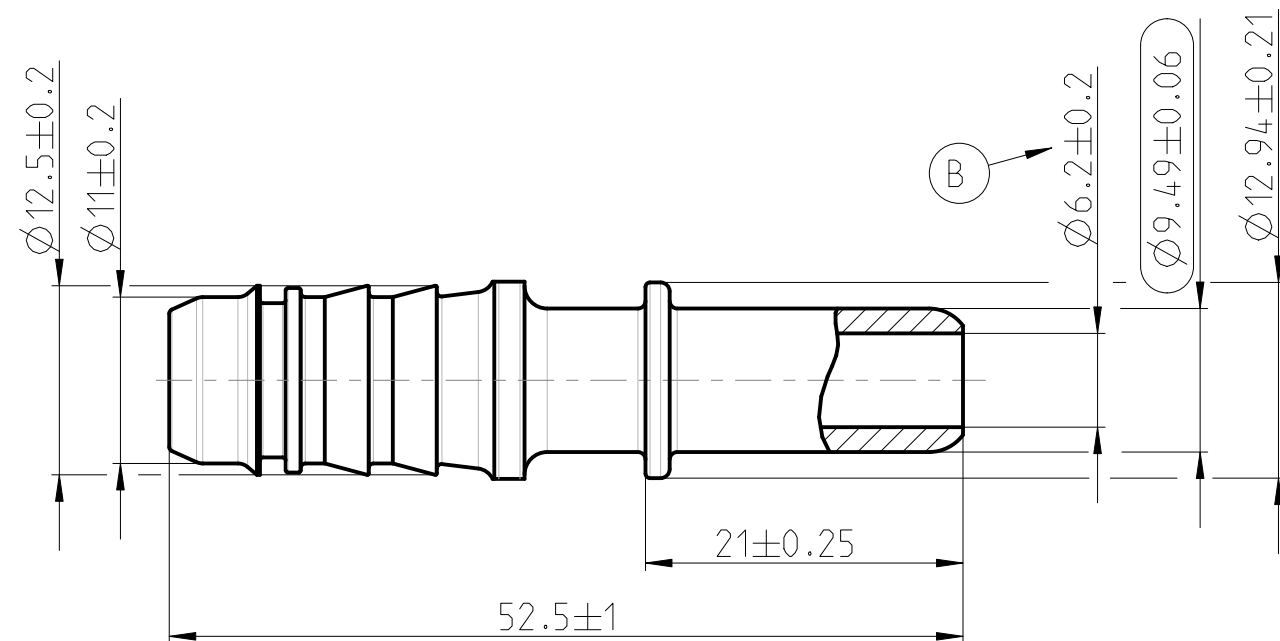
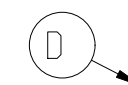




Angebotszeichnung  
QUOTATION DRAWING



MASSSTAB/SCALE 1:1



NORMAQUICK - SINGLE PART MARKING	
Lettering deepened, with changeable lettering insert. Valid for serial tools.	
Customer part-No.:	-
Trademark:	-
Manufacturer code:	NORMA
NORMA part name:	>3/8"<
Date clock:	NO
Material code:	>PA12-GF30<
Cavity marking:	YES

-	D	1	Marking table added	-	2013-06-12	Guru	Kaya
-	C	-	Zeichnung nicht von Aenderung betroffen / Drawing not affected	-	2011-11-02	KM/IC	Jacksteit
-	B	1	Mass war Ø6.3+0.3 / Measure was Ø6.3+0.3	607572	2009-05-18	Danzebrink	Jacksteit
-	A	1	Fertigungszeichnung geaendert / Manufacturing drawing modified	607412	2009-02-26	Danzebrink	Jacksteit
INDEX Teil PART	Zeichg DWG	Anz. QTY.	Aenderung DESCRIPTION	Aend.Nr. CHANGE-NO.	Datum DATE	Bearb. DRAWN	Gepr. CHECKED
Allgemeintoleranz: GENERAL TOLERANCE:		Form- und Lagetoleranz: FORM AND POS. TOL.:		Abmass fuer Winkel: DEVIATION FOR ANGLE:		Gewicht / WEIGHT: errechnet CALCULATED	
-		-		-		-	
Projektions-Methode 1 1st ANGLE PROJECTION DIN ISO 128-30 		Material: PA12-GF30 Material-No.: - Oberflaeche: black SURF. QUAL.:		PART NAME:  Adapter piece NORMAQUICK S NW 3/8''-10-0° -			
NORMA-Patentnummer: PATENT NUMBER:		Massstab: SCALE: 2:1 -	Datum/DATE 2009-02-24 2009-02-24 -	Name/NAME Reichl Jacksteit -			
Bandlaenge: LENGTH OF BAND:		Schutzvermerk nach ISO 16016 beachten CONSIDER AFTER PROTECTION NOTICE ISO 16016					
ZNE:							
Ursprung/Anfrage: ENQUIRY-No.:							
9901582427		NORMA Germany GmbH Postfach 1149 • 63461 Maintal © COPYRIGHT BY NORMA Group					
CAD-SYSTEM Pro/Engineer		DRAWING-NAME: 07158047010_Q		SUB.F.: -		SUB.FROM: -	
		MODEL-NAME: 07158047010		MODEL-TYP: PART			